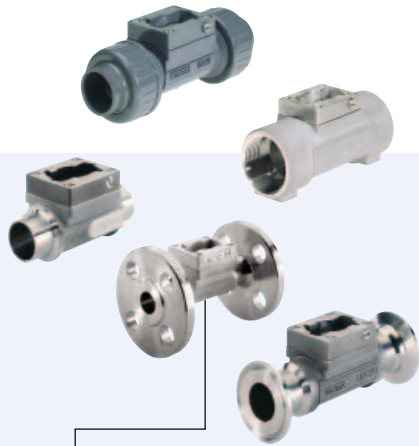


INLINE sensor-fitting with paddle wheel for flow measurement



Type S030 can be combined for...



Type 8030
Flowmeter



Type 8032
On/Off flowmeter



Type SE30 Ex
Flowmeter
ATEX version



Type 8035
Flowmeter



Type 8036
Flowmeter



Type 8611
Universal-Controler
eControl

- DN06 to DN65
- Closed pipe system, sensor inside fitting
- Quarter-turn technology
- Transmitter available for:
 - Indication, Monitoring, Transmitting
 - On/Off control, Batch control

The sensor-fitting S030 has a built-in paddle wheel to measure the flow rate. When liquid flows through the pipe, the paddle wheel is set in rotation producing pulses which frequency is proportional to the flow rate.

The Bürkert "INLINE Quarter-turn" technology is a construction ensuring a leakage free operation.

The paddle wheel rotation (permanent magnets included in the wheels) is detected contactless through the sensor-fitting wall. The transmitter can be snapped-on or removed without opening the pipe or interrupting the process.

The Bürkert Quarter-turn technology



| General data | |
|-----------------------------------|---|
| Pipe diameter | DN06...DN65 |
| Measurement range | 0.5...1200 l/min |
| Flow velocity | 0.3...10 m/s (see flow diagram) |
| Measurement error | Teach-In (via a remote transmitter) ±1% of Reading ¹⁾ (at the teach flow rate value) Standard K-factor ±2.5% of Reading ¹⁾ |
| Linearity¹⁾ | ±0.5% of F.S.* |
| Repeatability¹⁾ | ±0.4% of Reading |
| Process connections | Metal Internal or external thread, weld ends, Clamp or flange Plastic True union, spigot or external thread |
| Materials | Seal FKM or EPDM (depending on version, see ordering chart) Body Stainless steel (316L -1.4404), brass (CuZn ₃₉ Pb ₂), PVC, PP, PVDF Screws Stainless steel (316L -1.4404) Paddle wheel PVDF (PP on request or stainless steel, see data sheet 8030HT) Shaft and bearings Ceramics (Al ₂ O ₃) |
| Medium data | |
| Medium temperature | 0...+50°C (+32...+122°F) for sensor-fitting in PVC 0...+80°C (+32...+176°F) for sensor-fitting in PP -15...+100°C (+5...+212°F) for sensor-fitting in stainless steel, brass or PVDF |
| Medium pressure (max.) | see pressure/temperature chart Metal PN16 (232.16 PSI) (PN40 (580.4 PSI) on request) Plastic PN10 (145.1 PSI) |
| Fluid properties | clean, neutral or slightly aggressive, solid-free liquids Pollution max. 1%, size of particles 0.5 mm max. Viscosity 300 cSt. max. |

* F.S. = Full scale (10 m/s)

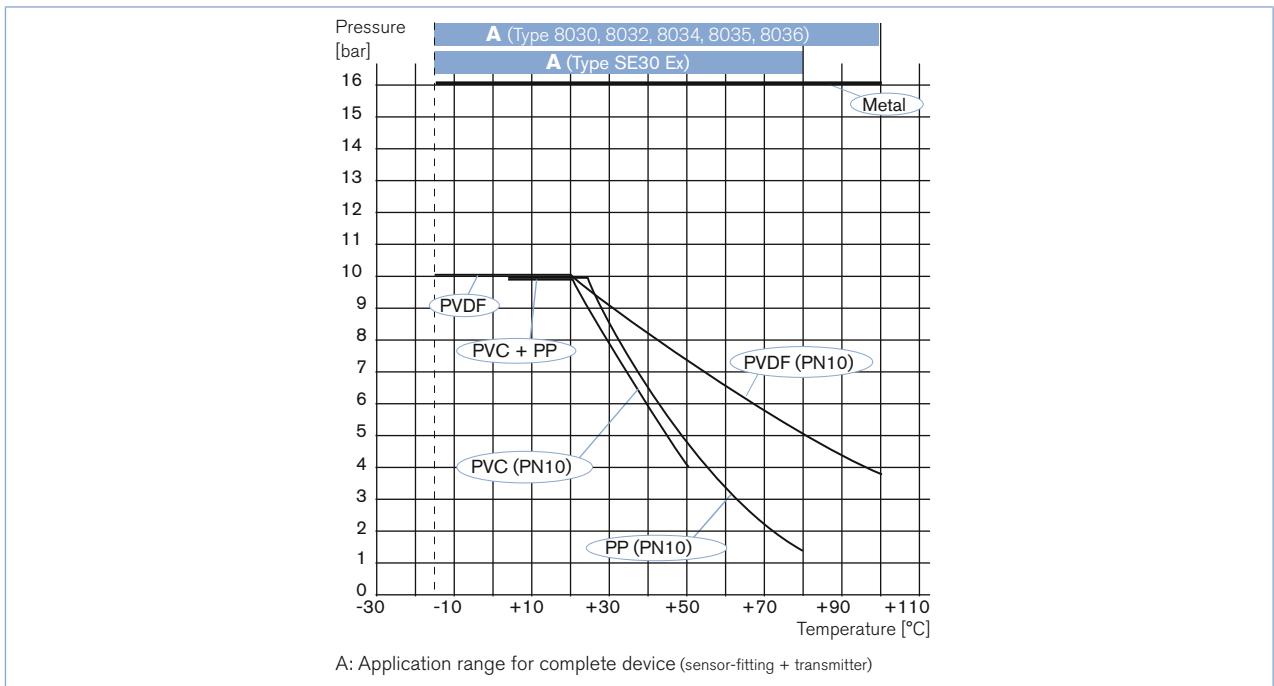
¹⁾ Under reference conditions i.e. measuring fluid = water, ambient and water temperature = 20°C, applying the minimum inlet and outlet pipe straights, matched inside pipe dimensions.

| Environment | |
|--|---|
| Ambient temperature (operating and storage) | -15...+60°C (+5...+122°F) for sensor-fitting in PVC -15...+80°C (+5...+176°F) for sensor-fitting in PP -15...+100°C (+5...+212°F) for sensor-fitting in stainless steel, brass or PVDF depending on associated transmitter |
| Standards, directives and Certifications | |
| Directive - Pressure | Complying with article 4, §1 of 2014/68/EU directive* |
| Certificate on request | Inspection certificate 3.1 (acc. to EN-ISO 10204); Test report 2.2 (acc. to EN-ISO 10204); Certification of Conformity for the surface Quality (DIN4762-DIN4768-ISO/4287/1); 3 points Flow calibration certificate; FDA declaration of conformity (stainless steel fitting only with EPDM seal) |

* For the 2014/68/EU pressure directive, the device can only be used under following conditions (depending on max. pressure, pipe diameter and fluid).

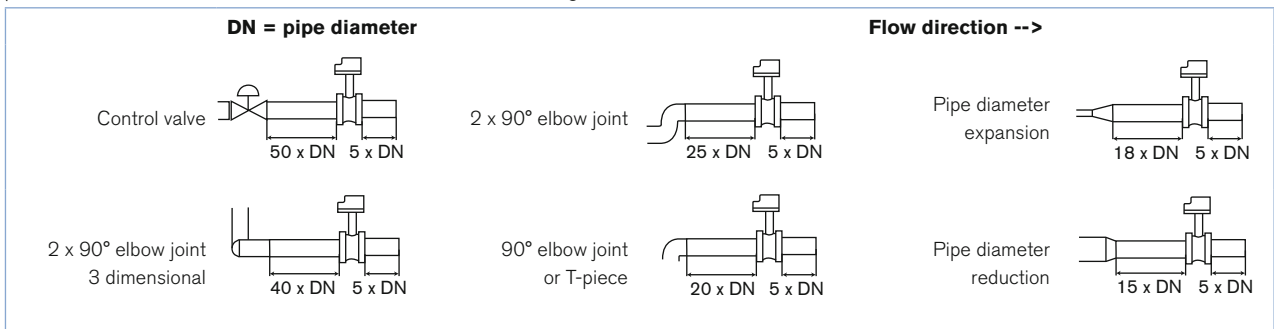
| Type of fluid | Conditions |
|--|-------------------------------------|
| Fluid group 1, article 4, §1.c.i | DN ≤ 25 |
| Fluid group 2, article 4, §1.c.i | DN ≤ 32 or PN*DN ≤ 1000 |
| Fluid group 1, article 4, §1.c.ii | DN ≤ 25 or PN*DN ≤ 2000 |
| Fluid group 2, article 4, §1.c.ii | DN ≤ 200 or PN ≤ 10 or PN*DN ≤ 5000 |

Pressure/temperature diagram



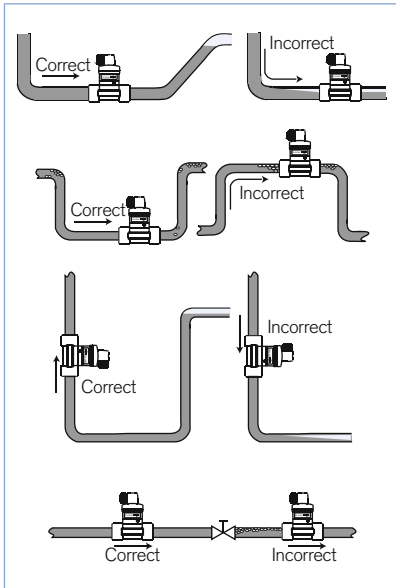
Installation

Minimum straight inlet and outlet distances must be observed. According to the pipes design, necessary distances can be bigger or use a flow conditioner to obtain the best results. The most important layouts that could lead to turbulence in the flow are shown below, together with the associated prescribed minimum inlet and outlet distances determined according to the standard EN ISO 5167-1



Installation

The device can be installed into either horizontal or vertical pipes.



Pressure and temperature ratings must be in accordance to the selected sensor-fitting material.

The suitable pipe size is selected using the diagram Flow/Velocity/DN.

Construction

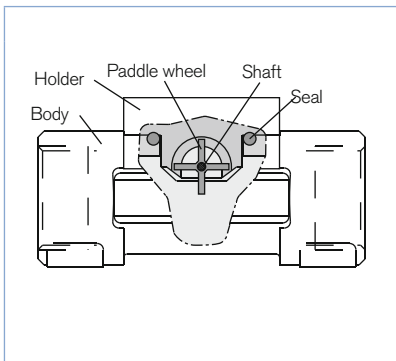
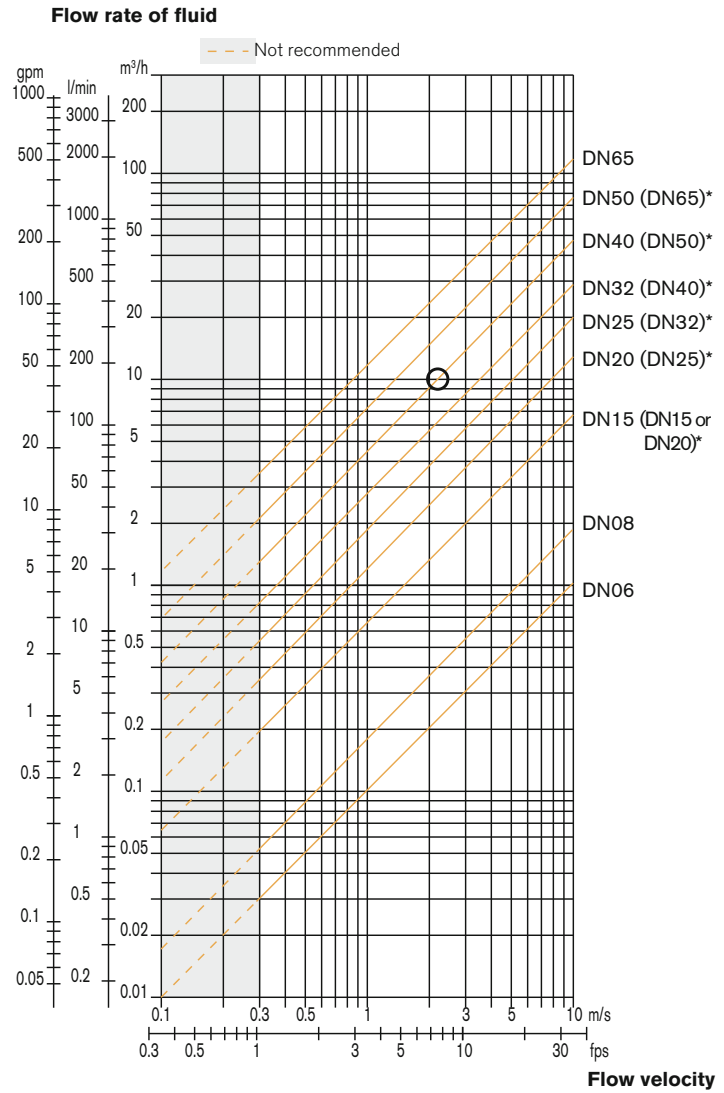


Diagram Flow/Velocity/DN

Example:

- Flow: 10 m³/h
- Ideal flow velocity: 2...3 m/s

For these specifications, the diagram indicates a pipe size of DN40 [or DN50 for (*) mentioned sensor-fittings]

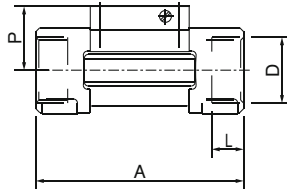


- * for following sensor-fittings with:
- external threads acc. to SMS 1145
 - weld ends acc. to SMS 3008, BS4825-1/ASME BPE/DIN 11866 series C or DIN 11850 series 2/ DIN 11866 series A/DIN EN 10357 series A
 - Clamp acc. to SMS 3017, BS 4825-3/ASME BPE or DIN 32676 series A

INLINE sensor-fitting dimensions

Internal thread connection

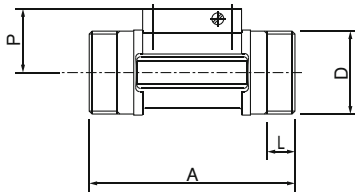
G, NPT or Rc
in stainless steel (316L - 1.4404) or
brass (CuZn39Pb2)



| DN | P | A | D | L |
|------|------|-------|-----------|------|
| [mm] | [mm] | [mm] | [inch] | [mm] |
| 15 | 34.5 | 84.0 | G 1/2 | 16.0 |
| | | | NPT 1/2 | 17.0 |
| | | | Rc 1/2 | 15.0 |
| 20 | 32.0 | 94.0 | G 3/4 | 17.0 |
| | | | NPT 3/4 | 18.3 |
| | | | Rc 3/4 | 16.3 |
| 25 | 32.2 | 104.0 | G 1 | 23.5 |
| | | | NPT 1 | 18.0 |
| | | | Rc 1 | 18.0 |
| 32 | 35.8 | 119.0 | G 1 1/4 | 23.5 |
| | | | NPT 1 1/4 | 21.0 |
| | | | Rc 1 1/4 | 21.0 |
| 40 | 39.6 | 129.0 | G 1 1/2 | 23.5 |
| | | | NPT 1 1/2 | 20.0 |
| | | | Rc 1 1/2 | 19.0 |
| 50 | 45.7 | 148.5 | G 2 | 27.5 |
| | | | NPT2 | 24.0 |
| | | | Rc 2 | 24.0 |

External thread connection

G, NPT or Rc
in stainless steel (316L - 1.4404),
brass (CuZn39Pb2),
PVC (only DN6 and DN8)
or PVDF (only DN8)

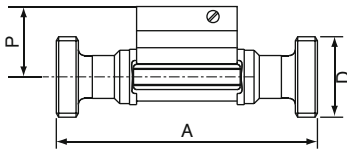


| DN | P | A | D | | L |
|------|------|-------|---------|------------|------|
| [mm] | [mm] | [mm] | [inch] | [mm] | [mm] |
| 06 | 29.5 | 90.0 | G 1/2 | - | 14.0 |
| 08 | 29.5 | 90.0 | ** 1/2 | M 16 x 1.5 | 14.0 |
| 15 | 34.5 | 84.0 | G 3/4 | - | 11.5 |
| 20 | 32.0 | 94.0 | G 1 | - | 13.5 |
| 25 | 32.2 | 104.0 | G 1 1/4 | - | 14.0 |
| 32 | 35.8 | 119.0 | G 1 1/2 | - | 18.0 |
| 40 | 39.6 | 129.0 | - | M 55 x 2 | 19.0 |
| 50 | 45.7 | 148.5 | - | M 64 x 2 | 20.0 |

** G, NPT, RC according to sensor-fitting version

External thread connection

SMS 1145,
in stainless steel (316L - 1.4404)

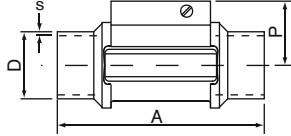


| DN | P | A | D |
|------|------|------|--------------|
| [mm] | [mm] | [mm] | |
| 25 | 32.0 | 130 | Rd 40 x 1/6" |
| 40 | 35.8 | 164 | Rd 60 x 1/6" |
| 50 | 39.6 | 173 | Rd 70 x 1/6" |

INLINE sensor-fitting dimensions

Weld end connection

EN ISO 1127/ISO 4200/DIN 11866 series B,
SMS 3008,
BS 4825-1/ASME BPE/DIN 11866 series C or
DIN 11850 series 2/DIN 11866 series A/
DIN EN 10357 series A
in stainless steel (316L - 1.4404)



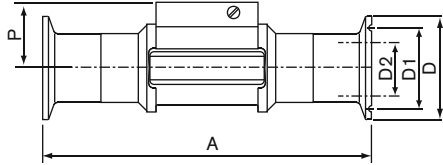
| DN | P | A | Standard | D | s |
|------|------|-------|---|-------|------|
| [mm] | [mm] | [mm] | | [mm] | [mm] |
| 08 | - | - | EN ISO 1127/ISO 4200/DIN 11866 series B | - | - |
| | - | - | SMS 3008 | - | - |
| | - | - | ASME BPE/DIN 11866 series C | - | - |
| | 29.5 | 96.0 | DIN 11850 series 2/DIN 11866 series A/ DIN EN 10357 series A | 13.00 | 1.50 |
| 15 | 34.5 | 84.0 | EN ISO 1127/ISO 4200/DIN 11866 series B | 21.30 | 1.60 |
| | - | - | SMS 3008 | - | - |
| | - | - | ASME BPE/DIN 11866 series C | - | - |
| | 34.5 | 84.0 | DIN 11850 series 2/DIN 11866 series A/ DIN EN 10357 series A | 19.0 | 1.50 |
| 20 | 32.0 | 94.0 | EN ISO 1127/ISO 4200/DIN 11866 series B | 26.9 | 1.60 |
| | - | - | SMS 3008 | - | - |
| | 34.5 | 84.0 | ASME BPE/DIN 11866 series C | 19.05 | 1.65 |
| | 34.5 | 84.0 | DIN 11850 series 2/DIN 11866 series A/ DIN EN 10357 series A | 23.00 | 1.50 |
| 25 | 32.2 | 104.0 | EN ISO 1127/ISO 4200/DIN 11866 series B | 33.70 | 2.00 |
| | 32.0 | 94.0 | SMS 3008 | 25.00 | 1.20 |
| | 32.0 | 94.0 | BS 4825-1/ASME BPE/DIN 11866 series C | 25.40 | 1.65 |
| | 32.0 | 94.0 | DIN 11850 series 2/DIN 11866 series A/ DIN EN 10357 series A | 29.00 | 1.50 |
| 32 | 35.8 | 119.0 | EN ISO 1127/ISO 4200/DIN 11866 series B | 42.40 | 2.00 |
| | - | - | SMS 3008 | - | - |
| | 32.2 | 104.0 | BS 4825-1/ASME BPE/DIN 11866 series C | 32.00 | 1.65 |
| | 32.2 | 104.0 | DIN 11850 series 2/DIN 11866 series A/ DIN EN 10357 series A | 35.00 | 1.50 |
| 40 | 39.6 | 129.0 | EN ISO 1127/ISO 4200/DIN 11866 series B | 48.30 | 2.00 |
| | 35.8 | 119.0 | SMS 3008 | 38.00 | 1.20 |
| | 35.8 | 119.0 | BS 4825-1/ASME BPE/DIN 11866 series C | 38.10 | 1.65 |
| | 35.8 | 119.0 | DIN 11850 series 2/DIN 11866 series A/ DIN EN 10357 series A | 41.00 | 1.50 |
| 50 | 45.7 | 148.5 | EN ISO 1127/ISO 4200/DIN 11866 series B | 60.30 | 2.60 |
| | 39.6 | 128.0 | SMS 3008 | 51.00 | 1.20 |
| | 39.6 | 128.0 | BS 4825-1/ASME BPE/DIN 11866 series C | 50.80 | 1.65 |
| | 39.6 | 128.0 | DIN 11850 series 2/DIN 11866 series A/ DIN EN 10357 series A | 53.00 | 1.50 |
| 65 | - | - | EN ISO 1127/ISO 4200/DIN 11866 series B | - | - |
| | 45.7 | 147.0 | SMS 3008 | 63.50 | 1.60 |
| | 45.7 | 147.0 | BS 4825-1/ASME BPE/DIN 11866 series C | 63.50 | 1.65 |
| | - | - | DIN 11850 series 2/DIN 11866 series A/ DIN EN 10357 series A | - | - |

INLINE sensor-fitting dimensions

Clamp connection

DIN 32676 series B,
SMS 3017*,
BS 4825-3/ASME BPE* or
DIN 32676 series A
in stainless steel (316L - 1.4404)

* Available with internal surface finish Ra = 0.8 µm

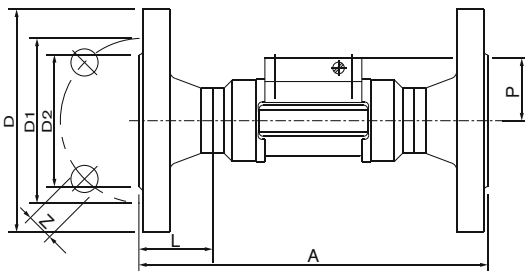


| DN [mm] | P [mm] | A [mm] | Standard | D2 [mm] | D1 [mm] | D [mm] |
|------------|-----------|-----------|----------------------------------|------------|------------|-----------|
| 08 | - | - | DIN 32676 series B ¹⁾ | - | - | - |
| | - | - | SMS 3017 | - | - | - |
| | - | - | ASME BPE | - | - | - |
| | 29.5 | 125 | DIN 32676 series A | 10.00 | 27.5 | 34.0 |
| 15 | 34.5 | 130 | DIN 32676 series B ¹⁾ | 18.10 | 27.5 | 34.0 |
| | - | - | SMS 3017 | - | - | - |
| | - | - | ASME BPE | - | - | - |
| | 29.5 | 119 | DIN 32676 series A | 16.00 | 27.5 | 34.0 |
| 20 | 32.0 | 150 | DIN 32676 series B | 23.70 | 43.5 | 50.5 |
| | - | - | SMS 3017 | - | - | - |
| | 34.5 | 119 | ASME BPE | 15.75 | 19.6 | 25.0 |
| | 34.5 | 119 | DIN 32676 series A | 20.00 | 27.5 | 34.0 |
| 25 | 32.2 | 160 | DIN 32676 series B | 29.70 | 43.5 | 50.5 |
| | 32.0 | 129 | SMS 3017 | 22.60 | 43.5 | 50.5 |
| | 32.0 | 129 | BS 4825-3/ASME BPE | 22.10 | 43.5 | 50.5 |
| | 32.0 | 136 | DIN 32676 series A | 26.00 | 43.5 | 50.5 |
| 32 | 35.8 | 180 | DIN 32676 series B | 38.40 | 43.5 | 50.5 |
| | - | - | SMS 3017 | - | - | - |
| | - | - | BS 4825-3/ASME BPE | - | - | - |
| | - | - | DIN 32676 series A | - | - | - |
| 40 | 39.6 | 200 | DIN 32676 series B | 44.30 | 56.5 | 64.0 |
| | 35.8 | 161 | SMS 3017 | 35.60 | 43.5 | 50.5 |
| | 35.8 | 161 | BS 4825-3/ASME BPE | 34.80 | 43.5 | 50.5 |
| | 35.8 | 161 | DIN 32676 series A | 38.00 | 43.5 | 50.5 |
| 50 | 45.7 | 230 | DIN 32676 series B | 55.10 | 70.5 | 77.5 |
| | 39.6 | 192 | SMS 3017 | 48.60 | 56.5 | 64.0 |
| | 39.6 | 192 | BS 4825-3/ASME BPE | 47.50 | 56.5 | 64.0 |
| | 39.6 | 170 | DIN 32676 series A | 50.00 | 56.5 | 64.0 |
| 65 | - | - | DIN 32676 series B | - | - | - |
| | 45.7 | 216 | SMS 3017 | 60.30 | 70.5 | 77.5 |
| | 45.7 | 216 | BS 4825-3/ASME BPE | 60.20 | 70.5 | 77.5 |
| | - | - | DIN 32676 series A | - | - | - |

¹⁾ similar to DIN 32676 series B but with clamp 34.0

Flange connection

EN1092-1/B1/PN16, ANSI B16-5 or JIS 10 K
in stainless steel (316L - 1.4404)

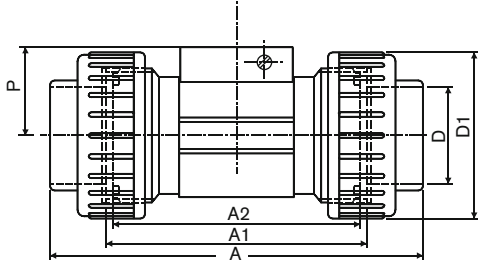


| DN [mm] | P [mm] | A [mm] | Standard | L [mm] | Z [mm] | D2 [mm] | D1 [mm] | D [mm] | | | | |
|------------|-----------|-----------|----------|-----------|-----------|------------|------------|-----------|----------|------|-------|-------|
| 15 | 34.5 | 130 | EN | 23.5 | 4 x 14.0 | 45.0 | 65.0 | 95.0 | | | | |
| | | | ANSI | | | | | | 4 x 15.8 | 34.9 | 60.3 | 89.0 |
| | | | JIS | | | | | | 4 x 15.0 | 51.0 | 70.0 | 95.0 |
| 20 | 32.0 | 150 | EN | 28.5 | 4 x 14.0 | 58.0 | 75.0 | 105.0 | | | | |
| | | | ANSI | | | | | | 4 x 15.8 | 42.9 | 69.8 | 99.0 |
| | | | JIS | | | | | | 4 x 15.0 | 56.0 | 75.0 | 100.0 |
| 25 | 32.2 | 160 | EN | 28.5 | 4 x 14.0 | 68.0 | 85.0 | 115.0 | | | | |
| | | | ANSI | | | | | | 4 x 15.8 | 50.8 | 79.4 | 108.0 |
| | | | JIS | | | | | | 4 x 19.0 | 67.0 | 90.0 | 125.0 |
| 32 | 35.8 | 180 | EN | 31.0 | 4 x 18.0 | 78.0 | 100.0 | 140.0 | | | | |
| | | | ANSI | | | | | | 4 x 15.8 | 63.5 | 88.9 | 117.0 |
| | | | JIS | | | | | | 4 x 19.0 | 76.0 | 100.0 | 135.0 |
| 40 | 39.6 | 200 | EN | 36.0 | 4 x 18.0 | 88.0 | 110.0 | 150.0 | | | | |
| | | | ANSI | | | | | | 4 x 15.8 | 73.0 | 98.4 | 127.0 |
| | | | JIS | | | | | | 4 x 19.0 | 81.0 | 105.0 | 140.0 |
| 50 | 45.7 | 230 | EN | 41.0 | 4 x 18.0 | 102.0 | 125.0 | 165.0 | | | | |
| | | | ANSI | | | | | | 4 x 19.0 | 92.1 | 120.6 | 152.0 |
| | | | JIS | | | | | | 4 x 19.0 | 96.0 | 120.0 | 155.0 |

INLINE sensor-fitting dimensions

True union connection

DIN 8063, ASTM D 1785/76 or JIS K in PVC,
 DIN 16962 in PP or
 ISO 10931 in PVDF

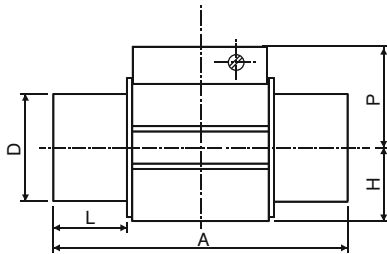


| DN | P | A | Standard | A1 | A2 | D | D1 |
|------|------|-------------------------|------------------------|--------------|--------------|-------------------------|-------------|
| [mm] | [mm] | [mm] | | [mm] | [mm] | [mm] | [mm] |
| 08* | 29.5 | 122.0 - - | DIN/ISO ASTM JIS | 92 - - | 90 - - | 12.00 - - | - - - |
| 15 | 34.5 | 128.0 130.0 129.0 | DIN/ISO ASTM JIS | 96 | 90 | 20.00 21.30 18.40 | 43 |
| 20 | 32.0 | 144.0 145.6 145.0 | DIN/ISO ASTM JIS | 106 | 100 | 25.00 26.70 26.45 | 53 |
| 25 | 32.2 | 160.0 161.4 161.0 | DIN/ISO ASTM JIS | 116 | 110 | 32.00 33.40 32.55 | 60 |
| 32 | 35.8 | 168.0 170.0 169.0 | DIN/ISO ASTM JIS | 116 | 110 | 40.00 42.20 38.60 | 74 |
| 40 | 39.6 | 188.0 190.2 190.0 | DIN/ISO ASTM JIS | 127 | 120 | 50.00 48.30 48.70 | 83 |
| 50 | 45.7 | 212.0 213.6 213.0 | DIN/ISO ASTM JIS | 136 | 130 | 63.00 60.30 60.80 | 103 |

* Only available in PVC

Spigot connection

DIN 8063 in PVC
 DIN 16962 in PP or
 ISO 10931 in PVDF



| DN | P | A | Standard | L | D | H |
|------|------|-------------------|------------------------------------|----------------------|------|------|
| [mm] | [mm] | [mm] | | [mm] | [mm] | [mm] |
| 15 | 34.5 | 90 85 85 | DIN 8063 DIN 16962 ISO 10931 | 16.5 14.0 14.0 | 20 | 17.5 |
| 20 | 32.0 | 100 92 92 | DIN 8063 DIN 16962 ISO 10931 | 20.0 16.0 16.0 | 25 | 17.5 |
| 25 | 32.2 | 110 95 95 | DIN 8063 DIN 16962 ISO 10931 | 23.0 18.0 18.0 | 32 | 21.5 |
| 32 | 35.8 | 110 100 100 | DIN 8063 DIN 16962 ISO 10931 | 27.5 20.0 20.0 | 40 | 27.5 |
| 40 | 39.6 | 120 106 106 | DIN 8063 DIN 16962 ISO 10931 | 30.0 23.0 23.0 | 50 | 31.5 |
| 50 | 45.7 | 130 110 110 | DIN 8063 DIN 16962 ISO 10931 | 37.0 27.0 27.0 | 63 | 39.5 |

Ordering chart for sensor-fitting S030

| Port connection | Seal | Standard | Item no. | | | | | | | | | |
|---|------|---|------------|------------|-----------------------|-----------------------|-----------------------|---------|---------|---------|---------|-----------------------|
| | | | DN06*-1/4" | DN06*-1/2" | DN08*-1/2" | DN15 | DN20 | DN25 | DN32 | DN40 | DN50 | DN 65 |
| Brass - with PVDF paddle wheel - Medium temperature max. 100°C, PN16 | | | | | | | | | | | | |
| Internal thread | FKM | G | - | - | - | 423 980 | 423 981 | 423 982 | 423 983 | 423 984 | 423 985 | - |
| | | NPT | - | - | - | 423 986 | 423 987 | 423 988 | 423 989 | 423 990 | 423 991 | - |
| | | Rc | - | - | - | 423 992 | 423 993 | 423 994 | 423 995 | 423 996 | 423 997 | - |
| External thread | FKM | G | 552 557 | 552 527 | 444 023 | 423 998 | 423 999 | 424 000 | 424 001 | 424 002 | 424 003 | - |
| | | NPT | - | - | 449 182 | - | - | - | - | - | - | - |
| | | Rc | - | - | 448 668 | - | - | - | - | - | - | - |
| Metric | FKM | | - | - | 16x1.5mm 552 526 | - | - | - | - | - | - | |
| Stainless steel - with PVDF paddle wheel - Medium temperature max. 100°C, PN16 | | | | | | | | | | | | |
| Internal thread | FKM | G | - | - | - | 424 004 | 424 005 | 424 006 | 424 007 | 424 008 | 424 009 | - |
| | | NPT | - | - | - | 424 010 | 424 011 | 424 012 | 424 013 | 424 014 | 424 015 | - |
| | | Rc | - | - | - | 424 016 | 424 017 | 424 018 | 424 019 | 424 020 | 424 021 | - |
| External thread | FKM | G | 552 733 | 552 559 | 444 029 | 424 022 | 424 023 | 424 024 | 424 025 | 424 026 | 424 027 | - |
| | | NPT | - | - | 449 050 | - | - | - | - | - | - | - |
| | | Rc | - | - | 448 669 | - | - | - | - | - | - | - |
| | EPDM | SMS 1145 | - | - | - | - | - | 443 306 | - | 443 307 | 443 308 | - |
| Weld end | FKM | EN ISO 1127/ISO 4200/ DIN 11866 series B | - | - | 552 845 ¹⁾ | 424 028 | 424 029 | 424 030 | 424 031 | 424 032 | 424 033 | - |
| | | SMS 3008 | - | - | - | - | - | 443 298 | - | 443 299 | 443 300 | 443 374 ⁴⁾ |
| | | BS 4825-1/ASME BPE/ DIN 11866 series C | - | - | - | - | 443 369 ³⁾ | 443 370 | 443 371 | 443 372 | 443 373 | 443 374 |
| | EPDM | DIN 11850 series 2/ DIN 11866 series A/ DIN EN 10357 series A | - | - | 551 788 | 551 789 | 551 790 | 551 791 | - | 551 792 | 551 793 | - |
| Clamp | FKM | DIN 32676 series B | - | - | - | 424 034 ²⁾ | 424 035 | 424 036 | 424 037 | 424 038 | 424 039 | - |
| | | SMS 3017 | - | - | - | - | - | 443 302 | - | 443 303 | 443 304 | 443 399 ⁴⁾ |
| | | SMS 3017** | - | - | - | - | - | 443 387 | - | 443 388 | 443 389 | 443 720 ⁴⁾ |
| | EPDM | BS 4825-3/ASME BPE | - | - | - | - | 443 395 ³⁾ | 443 396 | - | 443 397 | 443 398 | 443 399 |
| | | BS 4825-3/ASME BPE** | - | - | - | - | 443 400 | 443 717 | - | 443 718 | 443 719 | 443 720 |
| | | DIN 32676 series A | - | - | 551 794 ²⁾ | 551 795 ²⁾ | 551 796 | 551 797 | - | 551 798 | 551 799 | - |
| Flange | FKM | EN 1092-1/B1/PN16 | - | - | - | 424 040 | 424 041 | 424 042 | 424 043 | 424 044 | 424 045 | - |
| | | ANSI B16-5 | - | - | - | 424 046 | 424 047 | 424 048 | 424 049 | 424 050 | 424 051 | - |
| | | JIS 10K | - | - | - | 430 108 | 430 109 | 430 110 | 430 111 | 430 112 | 430 113 | - |
| Stainless steel - with PVDF paddle wheel - Medium temperature max. 100°C, PN40 | | | | | | | | | | | | |
| Internal thread | FKM | G | - | - | - | 427 138 | 425 737 | 425 729 | 427 152 | 427 153 | 427 154 | - |

* external thread

** internal surface finish Ra = 0.8 µm

¹⁾ EPDM seal²⁾ Refer to Clamp with D dimensions of 34 mm (see dimension table on page 6)³⁾ DN20 only available in ASME BPE⁴⁾ Please refer to ASME BPE

Ordering chart for sensor-fitting S030

| Port connection | Seal | Standard | Item no. | | | | | | | | | |
|--|------|----------------|------------|------------|------------|---------|---------|---------|---------|---------|---------|-------|
| | | | DN06*-1/4" | DN06*-1/2" | DN08*-1/2" | DN15 | DN20 | DN25 | DN32 | DN40 | DN50 | DN 65 |
| PVC - with PVDF paddle wheel - Medium temperature max. 50°C, PN10 | | | | | | | | | | | | |
| True union** | FKM | DIN 8063 | - | - | 444 022 | 423 938 | 423 939 | 423 940 | 423 941 | 423 942 | 423 943 | - |
| | | ASTM D 1785/76 | - | - | - | 423 950 | 423 951 | 423 952 | 423 953 | 423 954 | 423 955 | - |
| | | JIS K | - | - | - | 429 072 | 429 073 | 429 074 | 429 075 | 429 076 | 429 077 | - |
| Spigot | FKM | DIN 8063 | - | - | - | 423 944 | 423 945 | 423 946 | 423 947 | 423 948 | 423 949 | - |
| Extern. thr. | FKM | G | - | 552 560 | 444 025 | - | - | - | - | - | - | - |
| True union** | FKM | | - | - | - | 430 734 | 430 735 | 430 736 | 430 737 | 430 738 | 430 739 | - |
| without spigot | EPDM | | - | - | - | 430 740 | 430 741 | 430 742 | 430 743 | 430 744 | 430 745 | - |
| PP - with PVDF paddle wheel - Medium temperature max. 80°C, PN10 | | | | | | | | | | | | |
| True union** | FKM | DIN 16962 | - | - | - | 423 956 | 423 957 | 423 958 | 423 959 | 423 960 | 423 961 | - |
| Spigot | FKM | DIN 16962 | - | - | - | 423 962 | 423 963 | 423 964 | 423 965 | 423 966 | 423 967 | - |
| PVDF - with PVDF paddle wheel - Medium temperature max. 100°C, PN10 | | | | | | | | | | | | |
| True union** | FKM | ISO 10931 | - | - | - | 423 968 | 423 969 | 423 970 | 423 971 | 423 972 | 423 973 | - |
| Spigot | FKM | ISO 10931 | - | - | - | 423 974 | 423 975 | 423 976 | 423 977 | 423 978 | 423 979 | - |
| Extern. thr. | FKM | ISO 10931 | - | - | 444 028 | - | - | - | - | - | - | - |

* external thread

** with spigot and nut

Ordering chart accessories/spare parts (other versions on request)

O-ring set for plastic sensor-fitting

O-ring set for metal sensor-fitting

** depending on sensor holder version :
 - flat seal to use for holder with groove (old version)
 - O-Ring to use for holder with lug (new version and "v2")

! Two versions of the S030 in DN15 and DN20 exist, having different K factors.

Only version 2, identified by the "v2" marking, is available from March 2012. The "v2" marking can be found:

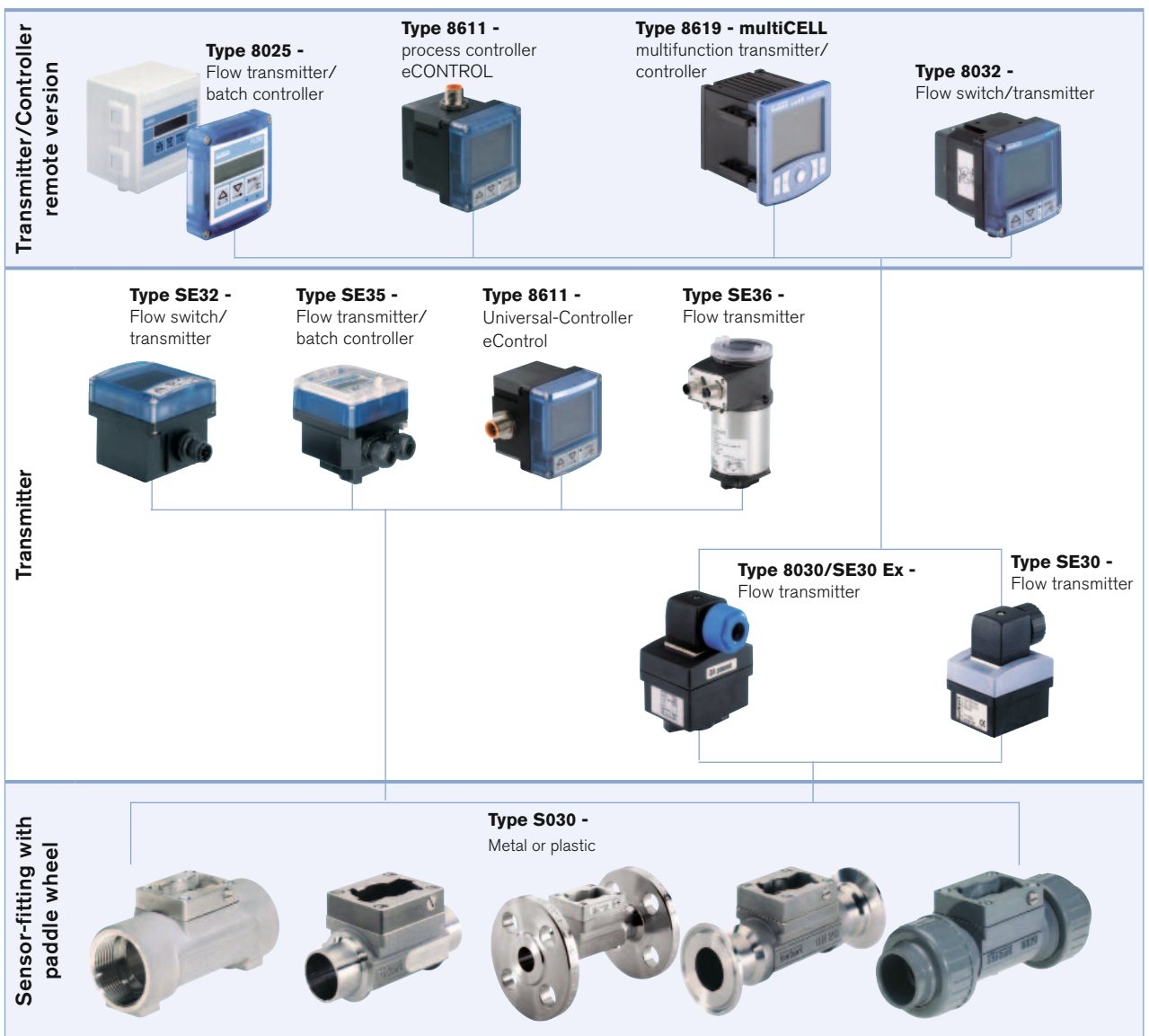
- on the bottom of the DN15 or DN20 sensor-fitting in plastic:
- on the side of the DN15 or DN20 sensor-fitting in metal:

| Description | Item no. |
|--|----------|
| Sensor holder | |
| Stainless steel with paddle wheel (PVDF), seal (FKM), screws and certificate for DN06, DN08, DN15 v2 and DN20 v2 | 448 678 |
| Stainless steel with paddle wheel (PVDF), seal (FKM), screws and certificate for DN15 (except DN15 v2 and DN20 v2)...DN65 | 432 306 |
| Stainless steel with paddle wheel (PVDF), seal (EPDM), screws and certificate for DN15 (except DN15 v2 and DN20 v2)...DN65 | 432 305 |
| Stainless steel with paddle wheel (PVDF), seal (EPDM), screws and certificate, Ra int. = 0.8 µm for DN15 (except DN15 v2 and DN20 v2)...DN65 | 434 149 |
| Stainless steel with paddle wheel (PP), seal (EPDM), screws and certificate for DN06, DN08, DN15 v2 and DN20 v2 | 554 896 |
| Stainless steel with paddle wheel (PP), seal (EPDM), screws and certificate for DN15 (except DN15 v2 and DN20 v2)...DN65 | 449 425 |
| Brass with paddle wheel (PVDF), seal (FKM), screws and certificate for DN06, DN08, DN15 v2 and DN20 v2 | 448 677 |
| Brass with paddle wheel (PVDF), seal (FKM), screws and certificate for DN15 (except DN15 v2 and DN20 v2)...DN65 | 432 304 |
| Brass with paddle wheel (PVDF), seal (EPDM), screws and certificate for DN15 (except DN15 v2 and DN20 v2)...DN65 | 432 303 |
| Brass with paddle wheel (PP), seal (EPDM), screws and certificate for DN15 (except DN15 v2 and DN20 v2)...DN65 | 449 866 |
| PVC with paddle wheel (PVDF), seal (FKM), screws and certificate for DN06, DN08, DN15 v2 and DN20 v2 | 448 674 |
| PVC with paddle wheel (PVDF), seal (FKM), screws and certificate for DN15 (except DN15 v2 and DN20 v2)...DN65 | 432 298 |
| PVC with paddle wheel (PVDF), seal (EPDM), screws and certificate for DN15 (except DN15 v2 and DN20 v2)...DN65 | 432 297 |
| PVC with paddle wheel (PP), seal (EPDM), screws and certificate for DN15 (except DN15 v2 and DN20 v2)...DN65 | 443 982 |
| PP with paddle wheel (PVDF), seal (FKM), screws and certificate for DN15...DN65 | 432 300 |
| PP with paddle wheel (PVDF), seal (EPDM), screws and certificate for DN15...DN65 | 432 299 |
| PP with paddle wheel (PP), seal (FKM), screws and certificate for DN15...DN65 | 552 881 |
| PP with paddle wheel (PP), seal (EPDM), screws and certificate for DN15...DN65 | 443 983 |
| PVDF with paddle wheel (PVDF), seal (FKM), screws and certificate for DN06, DN08, DN15 v2 and DN20 v2 | 448 676 |
| PVDF with paddle wheel (PVDF), seal (FKM), screws and certificate for DN15 (except DN15 v2 and DN20 v2)...DN65 | 432 302 |
| PVDF with paddle wheel (PVDF), seal (EPDM), screws and certificate for DN15 (except DN15 v2 and DN20 v2)...DN65 | 432 301 |
| O-ring set | |
| FKM - for metal sensor-fitting, DN06...DN65 | 426 340 |
| EPDM - for metal sensor-fitting, DN06...DN65 | 426 341 |
| FKM - for plastic sensor-fitting, DN08 | 448 679 |
| FKM - for plastic sensor-fitting, DN15 | 431 555 |
| FKM - for plastic sensor-fitting, DN20 | 431 556 |
| FKM - for plastic sensor-fitting, DN25 | 431 557 |
| FKM - for plastic sensor-fitting, DN32 | 431 558 |
| FKM - for plastic sensor-fitting, DN40 | 431 559 |
| FKM - for plastic sensor-fitting, DN50 | 431 560 |
| EPDM - for plastic sensor-fitting, DN08 | 448 680 |
| EPDM - for plastic sensor-fitting, DN15 | 431 561 |
| EPDM - for plastic sensor-fitting, DN20 | 431 562 |
| EPDM - for plastic sensor-fitting, DN25 | 431 563 |
| EPDM - for plastic sensor-fitting, DN32 | 431 564 |
| EPDM - for plastic sensor-fitting, DN40 | 431 565 |
| EPDM - for plastic sensor-fitting, DN50 | 431 566 |

Ordering chart accessories/spare parts (other versions on request)

| Description | Item no. |
|--|----------|
| Approvals/Certificates | |
| Inspection certificate 3.1 (acc. to EN-ISO 10204) | 803 723 |
| Test report 2.2 (acc. to EN-ISO 10204) | 803 722 |
| Certification of Conformity for the surface Quality (DIN4762-DIN4768-ISO/4287/1) | 804 175 |
| 3 points Flow calibration certificate (S020 combined with the flow device inserted, only for DN ≤ 200) | 550 676 |
| FDA approval | 803 724 |

Interconnection possibilities with the S030



To find your nearest Bürkert office, click on the orange box →

www.burkert.com

In case of special application conditions, please consult for advice.

Subject to alteration.
© Christian Bürkert GmbH & Co. KG

1705/15_EU-en_00891878

DTS 1000011766 EN Version: Y Status: RL (released | freigegeben | valide) printed: 09.05.2017