

**N-ViewOPC
OPC Server &
Diagnostic Monitor**

User Manual

Version 10.2.0

Copyright, © N-Tron Corporation, 2008-2015
3101 International Drive, Building 6
Mobile, AL 36606

US Patent 6,728,262

All rights reserved. Reproduction, adaptation, or translation without prior written permission from N-Tron Corporation is prohibited, except as allowed under copyright laws.

Ethernet is a registered trademark of Xerox Corporation. All other product names, company names, logos or other designations mentioned herein are trademarks of their respective owners.

The information contained in this document is subject to change without notice. N-Tron Corporation makes no warranty of any kind with regard to this material, including, but not limited to, the implied warranties of merchantability or fitness for a particular purpose. In no event shall N-Tron Corporation be liable for any incidental, special, indirect or consequential damages whatsoever included but not limited to lost profits arising out of errors or omissions in this manual or the information contained herein.

Contents

- Introduction 5
 - Compatibility..... 5
 - Installing N-View Diagnostic Monitor Software 6
- Configuring N-View 7
 - Detecting N-Tron Switches 7
 - Mapping Switches..... 8
 - Configuration of Modular Switches with Slots 10
 - Changing Monitor Timeout (Optional) 11
 - Assigning Switch Aliases (Optional) 12
 - Hiding Ports (Optional) 13
 - Setting Data Format (Optional) 14
 - Saving the Configuration..... 14
 - Export/Import Configuration Feature..... 15
 - Exporting the Configuration 15
 - Importing the Configuration 15
- N-ViewOPC Server & Diagnostic Monitoring..... 16
 - Switch Values 16
 - OPC Specific Values..... 16
 - N-Ring Values 17
 - Port Status Values 17
 - OPC Specific Values..... 17
 - Port Traffic Variables..... 19
 - Packet Size Information 19
 - Receive Packet Information 20
 - Transmit Packet Information 20
 - Port Error Variables..... 21
 - Receive Error Information 21
 - Transmit Error Information..... 22
- Interpreting the Data 23
 - Example of the “Port Counters” screen:..... 24

Example of a healthy switch port:	25
Example of potential cabling issues:.....	26
Automated Report	27

Introduction

The N-Tron Switches that are N-View capable generate a periodic multicast Ethernet frame for every port. This frame is then received and made available to the N-View OPC server and can be displayed by the N-View diagnostic monitor software.

The N-ViewOPC Server & Diagnostic Monitor is a Windows program that:

- creates and configures the database used by the OPC server, and/or
- can be used to monitor diagnostic data from the switch, and/or
- can launch N-View from a batch file, and have it generate a list of all the switch aliases that it found on-line and output that information to a text file.

The N-ViewOPC Server is a Windows service that runs after closing N-ViewOPC. The Server supplies configuration and real time tag data to the OPC Client. Only one OPC client can communicate with the N-ViewOPC Server at a time.

Note: The N-ViewOPC configuration must be completed prior to connecting an OPC client to the N-ViewOPC Server. The configurator must be saved and closed before the OPC client is connected to the N-ViewOPC Server. Failure to follow this rule may cause application errors.

Compatibility

For use with all N-View capable N-Tron switches, including:

- 300 Series (with –N extension)
- 500 Series (with –N or –A extension)
- 700 Series
- 7000 Series
- NT24k Series

Installing N-View Diagnostic Monitor Software

Minimum System Requirements:

Windows XP with Service Pack 3 (32 Bit Only), Windows 7 (32 Bit Only) with Administrator Privileges, or Windows 8 (32 Bit Only) with Administrator Privileges.

1. Insert the N-Tron Product CD into your CD/DVD drive.
2. In the event the main index page is not displayed automatically, you may load the page by browsing to the root folder of the CD/DVD drive and Double-Clicking on the index.html file.
3. Click on the heading labeled SOFTWARE then expand the N-View folder.
4. Double-Click on the setup executable file to begin the software installation process.
Note, some web browsers may require you to save a local copy to your system before running the setup executable.
5. Finish the setup by following the on screen prompts.



To install a previous version of N-ViewOPC, the current version must first be uninstalled.

Configuring N-View

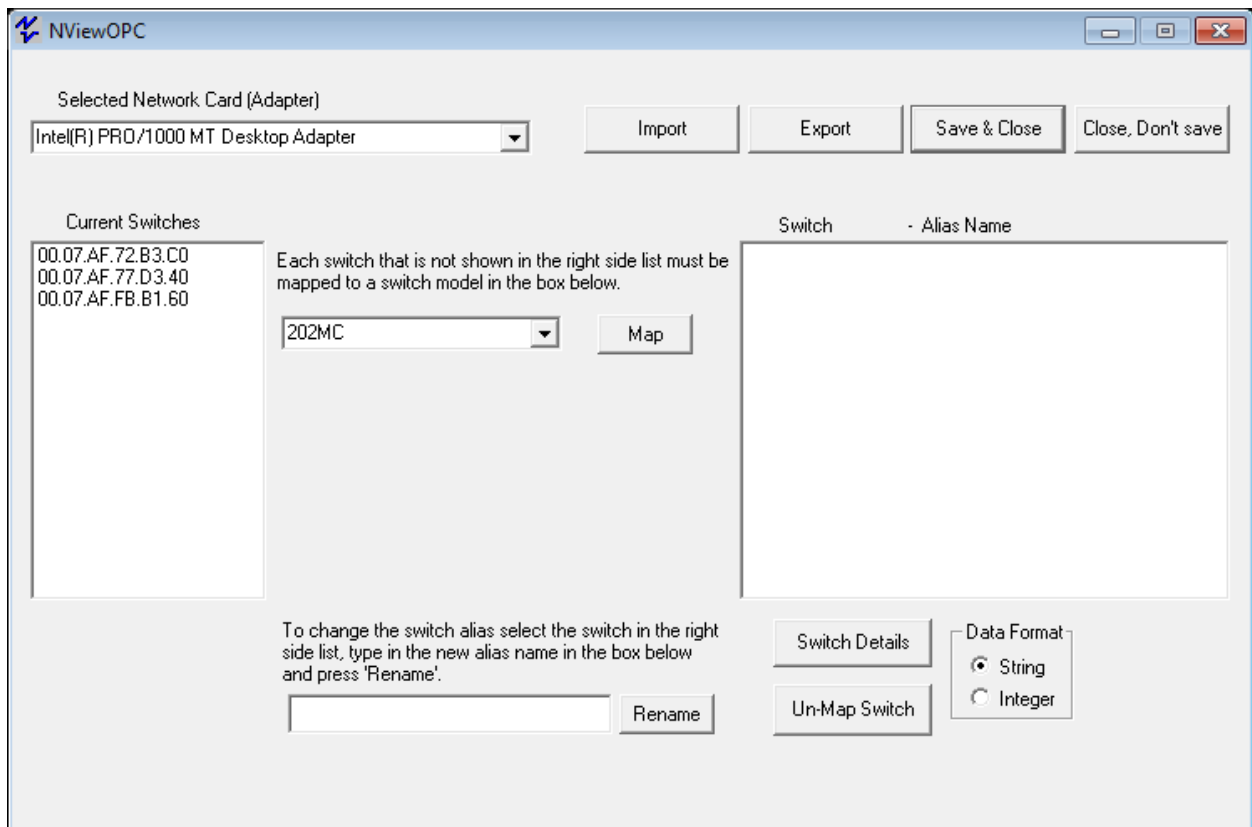
Detecting N-Tron Switches

Start by opening the N-View Diagnostic Monitor application. The shortcut can be found here:
Start > Programs > N-Tron > N-View



When run on Windows 7 or later, N-ViewOPC must be run as an Administrator.

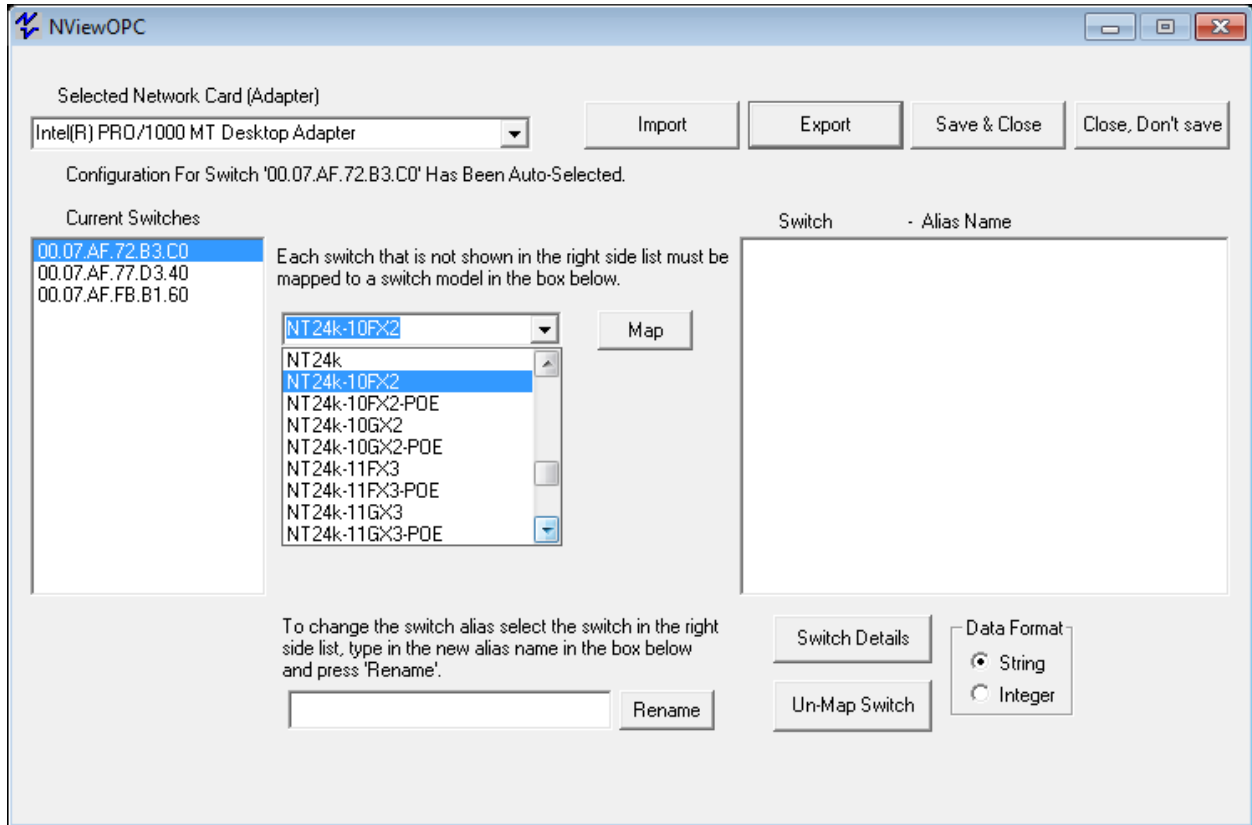
A screen similar to the following should appear:



If the Network Adapter that is displayed by default is not the adapter to which the switches of interest are connected, then select the correct adapter.

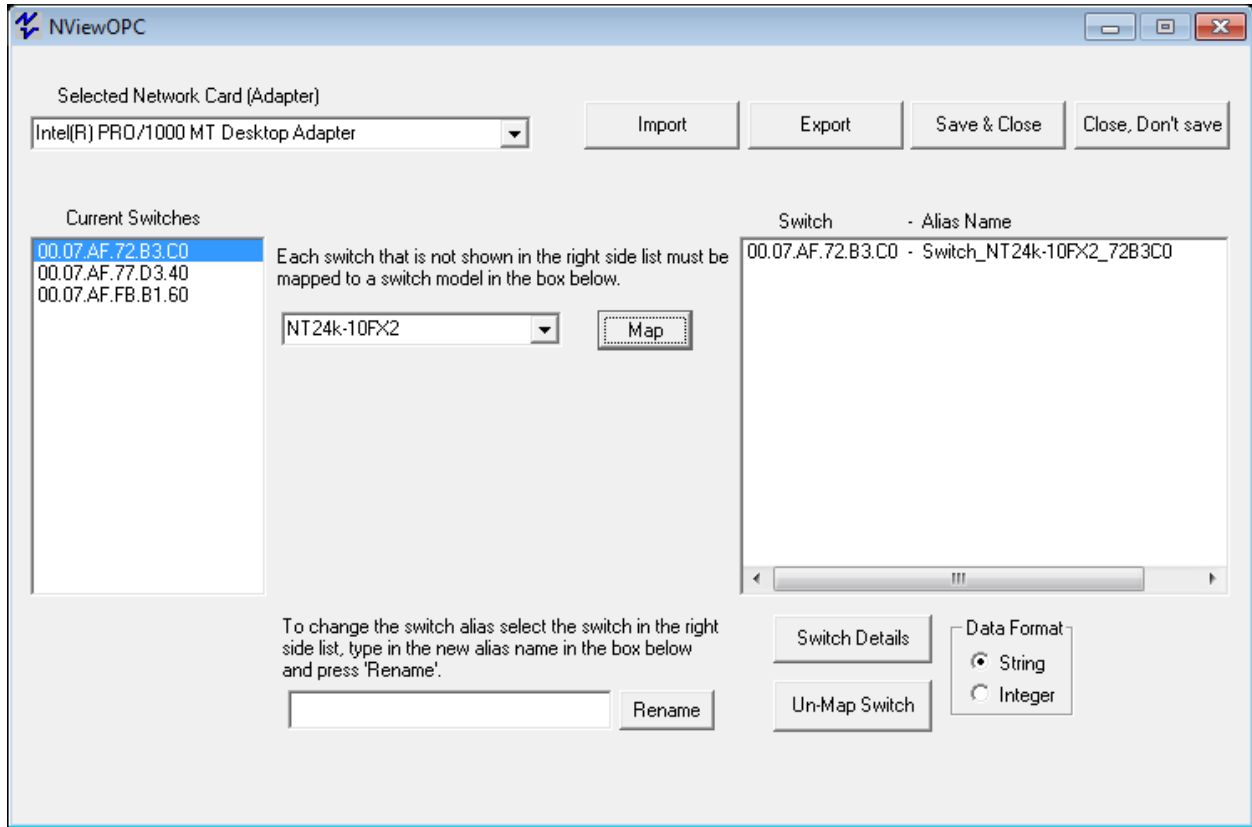
Mapping Switches

The mapping of a switch is required to access any information about that switch. To map a switch, select the switch of interest in the “**Current Switches**” window, and define the switch model from the configuration pull downs:



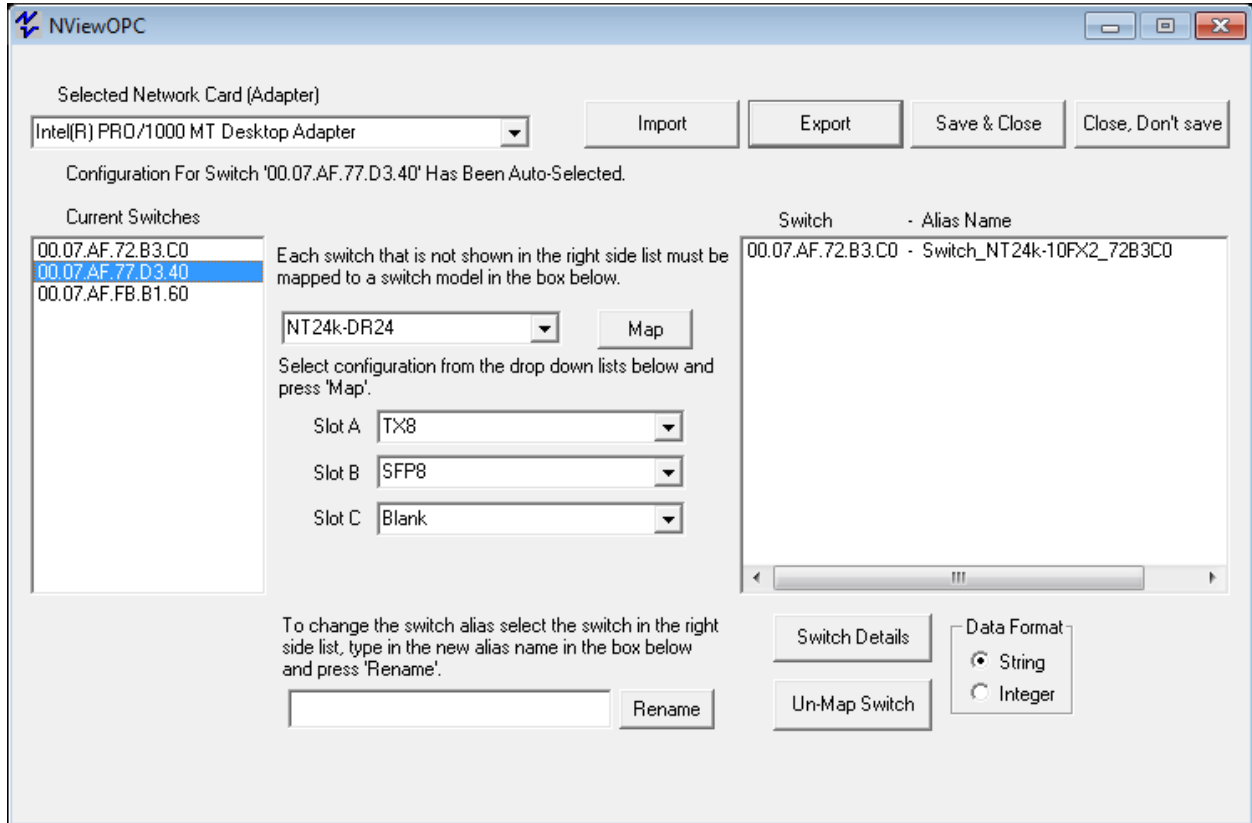
Several N-Tron switches report their model and configuration to N-View, and in those cases the switch model and configuration may automatically fill in the configuration values. These include all 700, 7000, NT24k and the –N and –A versions of several of the 500 series switches. Verify that these values are correct on both N-View and the switch before proceeding to map it. Note that the N-View values will reflect the user’s configuration for several switch versions.

If the selected switch does not contain slots or modules to be configured or verified, select the **“Map”** button:
(More on configuring slots and modules below)



Configuration of Modular Switches with Slots

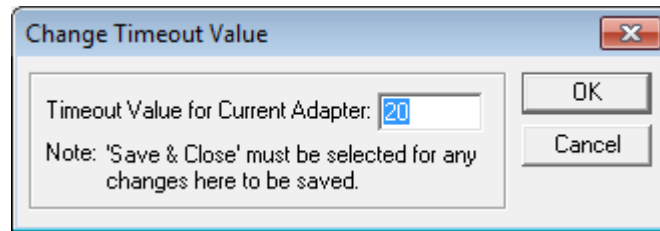
Several switch models are modular and have slots which can be populated with several kinds of modules. The available modular slot configuration pull downs are shown below the model name after selecting the switch model. The following is an example of what may be shown. The number and name of the modules will vary and be specific to the model being viewed.



Once the modules have been configured or verified, you may select the **“Map”** button.

Changing Monitor Timeout (Optional)

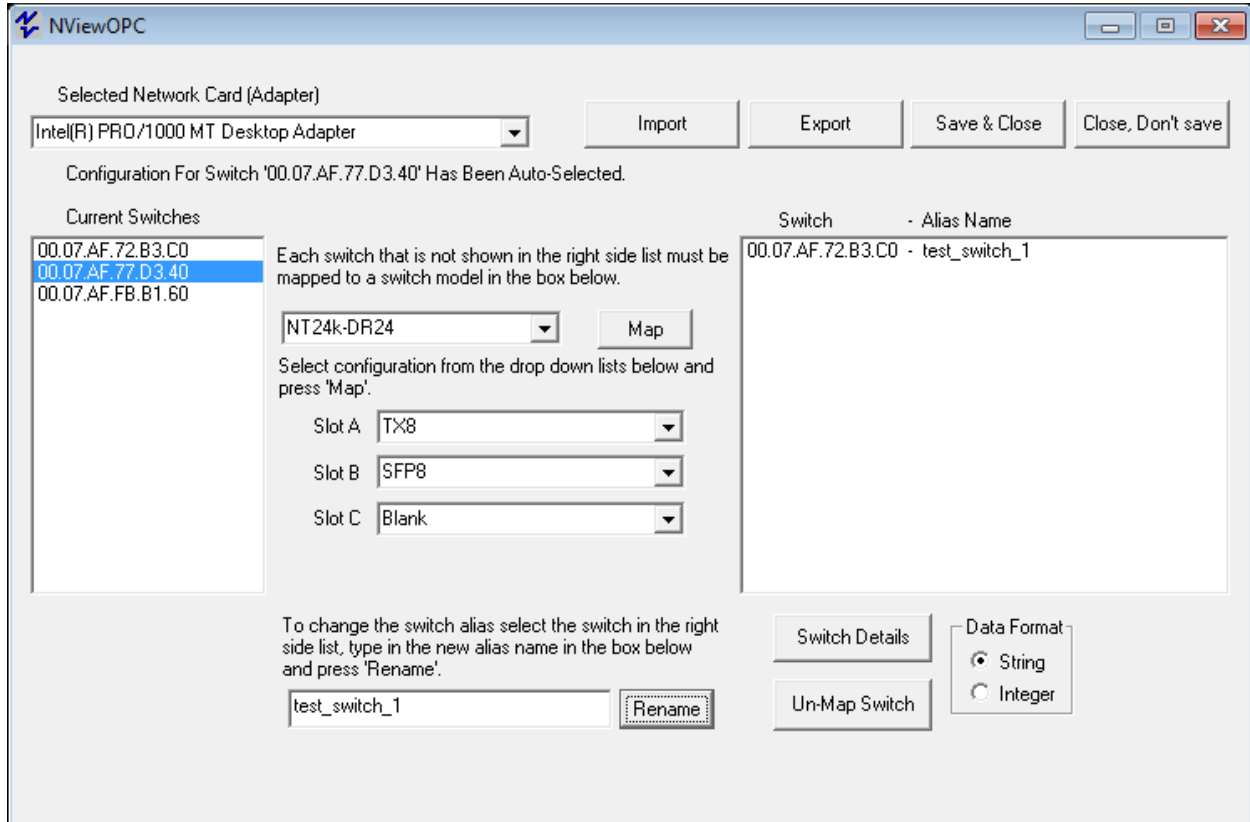
If desired, you can change the timeout value of the monitor by selecting “**Change Timeout Value...**” from the system menu, which is accessible by clicking the N-View icon located in the upper left corner of the main window. This value has a range of 20-1500 seconds. If a switch has become unreachable, after this time the values shown on the monitor will be invalidated (NA). If a switch hasn't sent data associated with a port on the switch, all items associated with the port will be invalidated (NA) after this time. Each adapter can have its own value for monitor timeout.



If changed, “**Save & Close**” must be selected to save this value.

Assigning Switch Aliases (Optional)

Next, if desired, you can give the switch an Alias Name by highlighting the switch in the right side window, typing an Alias Name, and selecting the **“Rename”** button:

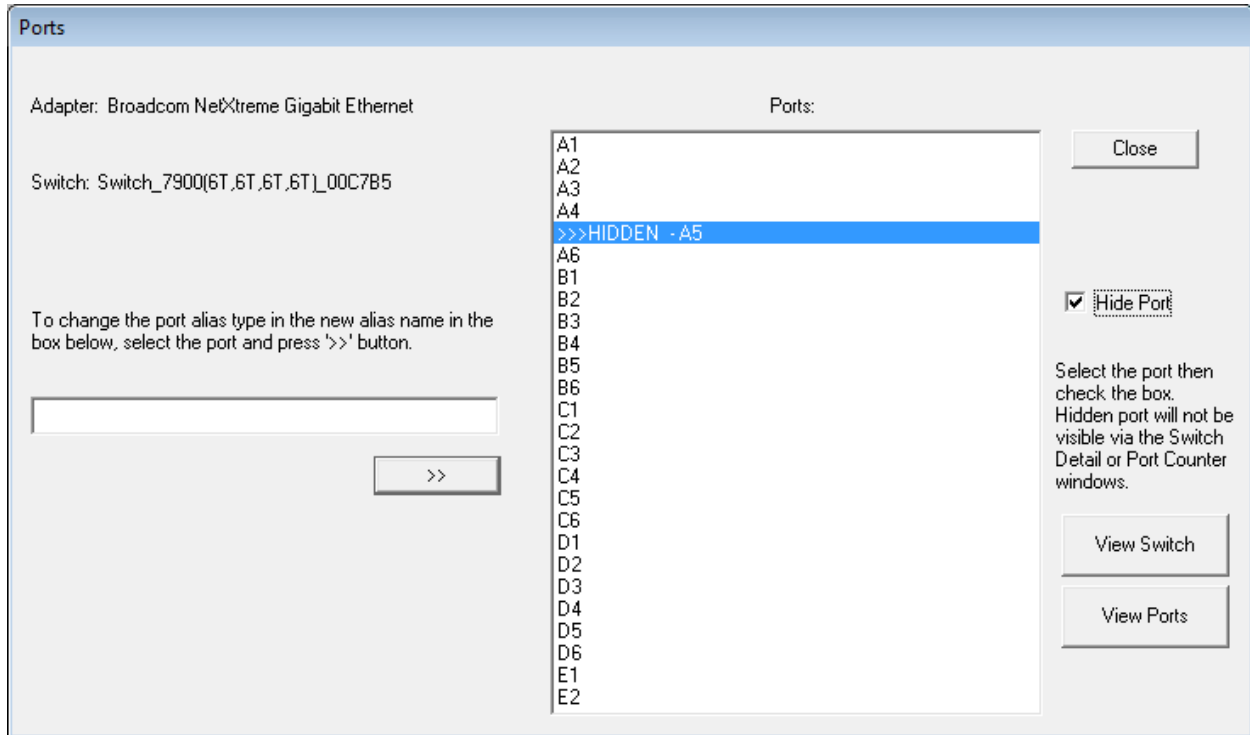


Users can assign switches custom alias names to create meaningful values. A switch alias can contain up to 35 characters, and cannot contain spaces, periods, or hyphens. A switch alias can have underscores.

Changing the switch alias in N-View does not change the name on the switch itself. This change is only tracked locally.

Hiding Ports (Optional)

Next, select the switch and click on **“Switch Details”**. The Ports window will appear. This allows you to hide unused ports, or to assign an alias to a port. Select the port to be hidden, and click the **“Hide Port”** checkbox:

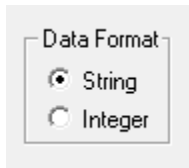


If desired, follow the directions in the window to assign a port alias. A port alias can contain up to 24 characters, and cannot contain spaces, periods, or hyphens. A port alias can have underscores.

Changing the port alias in N-View does not change the name on the switch itself. This change is only tracked locally.

Setting Data Format (Optional)

When the N-ViewOPC server communicates with the OPC Client, it can provide the switch data in either a string or integer format. The string format provides clear readable text for each data element whereas the integer format may need mapping to understand its value. See section “N-ViewOPC Server & Diagnostic Monitoring” for more information about this mapping.



To set this value, use the *Data Format* selection box in the lower right hand corner of the main window.

Saving the Configuration

Once the remapping has been completed, the configuration must be saved to allow for use of the configuration next time the N-View monitor is opened.

After configuring the ports, close the windows back to the initial (main) window.

After configuring all switches and ports, select “**Save & Close**” at the main window.

Export/Import Configuration Feature

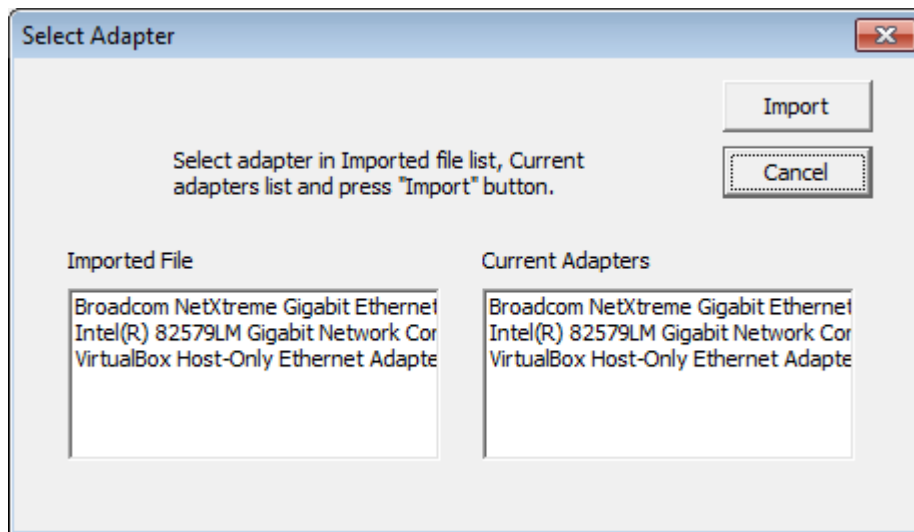
N-View includes an export/import feature that allows easy and accurate transfers of switch and port alias configurations from one PC to another. Perform an export on a source PC, bring the exported file to the target PC, and import it there. Selecting **"Save & Close"** will result in the switch and port aliases from the source PC being available on the target PC.

Exporting the Configuration

After configuring all switches and ports, the configuration must be saved before it is closed. Select **"Save & Close"** at the main window. Re-open N-View and select **"Export"** on the main N-View. The export location defaults to the user's application data folder, though that can be changed.

Importing the Configuration

Select **"Import"** on the main N-View screen and locate the file to be imported. After selecting the file and pressing **"Open"**, the following will be displayed:



Select one NIC in each window to assign which LAN the mapped and aliased switches are coming from (on source PC) and going to (on target PC).

The import will append the imported switches to those previously mapped to that NIC. Note that if the same switch (same unique MAC) was already mapped and is *also* mapped on the import file, it will be remapped based upon the import file.

Once the remapping has been completed, select **"Save & Close"** to save the configuration.

N-ViewOPC Server & Diagnostic Monitoring

Once a switch has been mapped, it can be monitored. Monitoring allows the user to review data specific to the switch and its ports. If a switch becomes unreachable, all values associated with that switch are invalidated (NA) after a user definable timeout period. If a switch doesn't send any data associated with a port, all values associated with that port are invalidated (NA) after the same timeout period (Defaults to 20 seconds).

The switch data can be monitored in two ways, through an OPC client or through the N-View GUI interface. The OPC Client and the N-View Monitor will display some data differently. When this occurs, it is noted.

Switch Values

Switch Values are shown on the Switch Details window and the Port Counters window.

Data Element	Description	Value
Switch (Alias)	Switch Name/Alias	Ex.: Switch_Nt24k-DR24
IP Address	Switch IP Address (Only shown on switches with IP Addresses)	Ex.: 192.168.1.50

OPC Specific Values

Data Element	Description	Value
Status	Indicates if the switch is Online or Offline	0 = Offline 1 = Online
Last_Update	Seconds since last data update from the switch	
MAC_Address	MAC address of the switch being monitored	Ex.: 00.07.AF.00.A6.A0
TotalPorts	Total number of ports on the switch	
MAC0 Through MAC5	Only available in integer mode. Six values representing the Switch MAC Address. MAC0 is the first value.	
IPO through IP3	Only available in integer mode. Four digits representing the Switch IP Address. IPO is the first digit.	

N-Ring Values

N-Ring Values are shown on the Switch Details window and the Port Counters window only on N-Ring capable switches. They will not be shown on switches that are not N-Ring capable.

Data Element	Description	Value
N-Ring Manager	Indicates if the switch is in N-Ring Manager Mode	0 = No or N/A 1 = Yes (N/A if no N-Ring Capability)
N-Ring Member	Indicates if the switch is an Active N-Ring Member	0 = No or N/A 1 = Yes (N/A if no N-Ring Capability)
N-Ring State	Indicates the current N-Ring State if the switch is an N-Ring Manager	0 = Fault (Also no N-Ring) 1 = Partial Fault (low rx) 2 = Partial Fault (high rx) 3 = Ok 4 = Not Manager (N/A if no N-Ring Capability)
N-Ring Version	Indicates the version of the N-Ring Protocol	(0 if no N-Ring Capability)

Port Status Values

Port Status Values are shown on the Switch Details window and/or the Port Counters window.

Data Element	Description	Value
Port	User assigned port alias name. A port alias can contain up to 24 characters, and cannot contain spaces.	
Duplex	Reflects the current duplex of the particular port.	0 = N/A (if link is down) 0 = Half 1 = Full
Link Status	The current status of the port	0 = Down 1 = Up
Speed	The current speed of the port	10, 100, 1000, or /NA
Usage	Current bandwidth utilization shown from RX or TX, whichever is greater.	0 to 100 %

OPC Specific Values

Data Element	Description	Value
Alias	User assigned port alias name. A port alias can contain up to 24 characters, and cannot contain spaces.	

Last_Update	Seconds since last data update from the switch for the port	
PortId	The numerical value of the port.	

Port Traffic Variables

Port Traffic Variables are shown on the Port Counters screen and have 32 bit accuracy. These parameters thus have a range of 0 to 4,294,967,295, and roll over through zero (to 1, 2...) if that number is exceeded.

Packet Size Information

Data Element	Description
64 Packets	The number of packets (including error packets) 64 bytes in size that have been received by the port, except that for the 9000 it is transmitted and received packets total.
65 to 127 Packets	The number of packets (including error packets) between 65 and 127 bytes in size that have been received by the port, except that for the 9000 it is transmitted and received packets total.
128 to 255 Packets	The number of packets (including error packets) between 128 and 255 bytes in size that have been received by the port, except that for the 9000 it is transmitted and received packets total.
256 to 511 Packets	The number of packets (including error packets) between 256 and 511 bytes in size that have been received by the port, except that for the 9000 it is transmitted and received packets total.
512 to 1023 Packets	The number of packets (including error packets) between 512 and 1023 bytes in size that have been received by the port, except that for the 9000 it is transmitted and received packets total.
1024 to 1522 Packets	The number of packets (including error packets) between 1024 and 1522 bytes in size that have been received by the port, except that for the 9000 it is transmitted and received packets total.

Receive Packet Information

Data Element	Description
Rx Octets	The total number of bytes that have been received over the port, including bad packets.
Rx Good Octets	The total number of bytes in all good packets that have been received over the port.
Rx Broadcast Packets	The total number of good packets that have been received over the port that are directed to the broadcast address.
Rx Multicast Packets	The total number of good packets that have been received over the port that are directed to multicast addresses.
Rx Unicast Packets	The total number of good packets that have been received over the port that are directed to unicast addresses.
Rx Pause Packets	The number of PAUSE frames received by a port. The PAUSE frame must: have a valid MAC Control frame EtherType field; have a destination MAC address of either the MAC control frame reserved multicast (01-80-c2-00-00-01) or the unique MAC address associated with the specific port; have a valid PAUSE opcode, (00-01); be a minimum of 64 bytes in length; and have a valid CRC.

Transmit Packet Information

Data Element	Description
Tx Octets	The total number of bytes that have been transmitted over the port.
Tx Collisions	The total number of collisions that have been experienced over the port during packet transmissions.
Tx Multiple Collision	The number of packets successfully transmitted by a port that experienced more than one collision.
Tx Single Collision	The number of packets successfully transmitted by a port that experienced exactly one collision.
Tx Broadcast Packets	The total number of good packets that have been transmitted over the port that are directed to the broadcast address.
Tx Multicast Packets	The total number of good packets that have been transmitted over the port that are directed to multicast addresses.
Tx Unicast Packets	The total number of good packets that have been transmitted over the port that are directed to unicast addresses.
Tx Pause Packets	The number of PAUSE frames transmitted by a port.

Port Error Variables

Port Error Variables are shown on the Port Counters screen and have 32 bit accuracy. These parameters thus have a range of 0 to 4,294,967,295, and roll over through zero (to 1, 2...) if that number is exceeded.

Receive Error Information

Data Element	Description
Rx Alignment Errors	The number of packets received by a port that have enough length between 64 and 1522 bytes, and have a bad FCS with a non-integral number of bytes.
Rx Dropped Packets	The number of good packets received by a port that were dropped due to the lack of resources. The counter is only incremented if the error was not counted by rx fcs errors, or rx alignment errors.
Rx FCS Errors	The number of packets received by a port that have enough length between 64 and 1522 bytes, and have a bad FCS with a non-integral number of bytes.
Rx Fragments	The number of packets received by a port that have less than 64 bytes, and have either an FCS error or an alignment error.
Rx Jabbers	The number of packets received by a port that are longer than 1522 bytes and have either an FCS error or an alignment error.
Rx Oversize Packets	The number of good packets received by a port that are greater than 1522 bytes.
Rx SA Changes	The number of times the source address of good receive packets has changed from the previous value. A count of greater than one usually indicates the port is connected to a repeater based network.
Rx Symbol Errors	The total number of times a valid length packet was received at a port and at least one invalid data symbol was detected. The counter only increments once per carrier event and does not increment if a collision occurs during that event.
Rx Undersize Packets	The number of good packets received by a port that are less than 64 bytes in length.
Rx Excessive Disc Size	The number of good packets received by a port that are greater than 1536 bytes (excluding framing bits but including the FCS) and were discarded due to excessive length. Note: The Port rx over size pkts counter alone is incremented for packets in the range 1523 – 1536 bytes inclusive, whereas both this counter and the Port rx over size pkts counter are incremented for packets of 1537 bytes and higher.

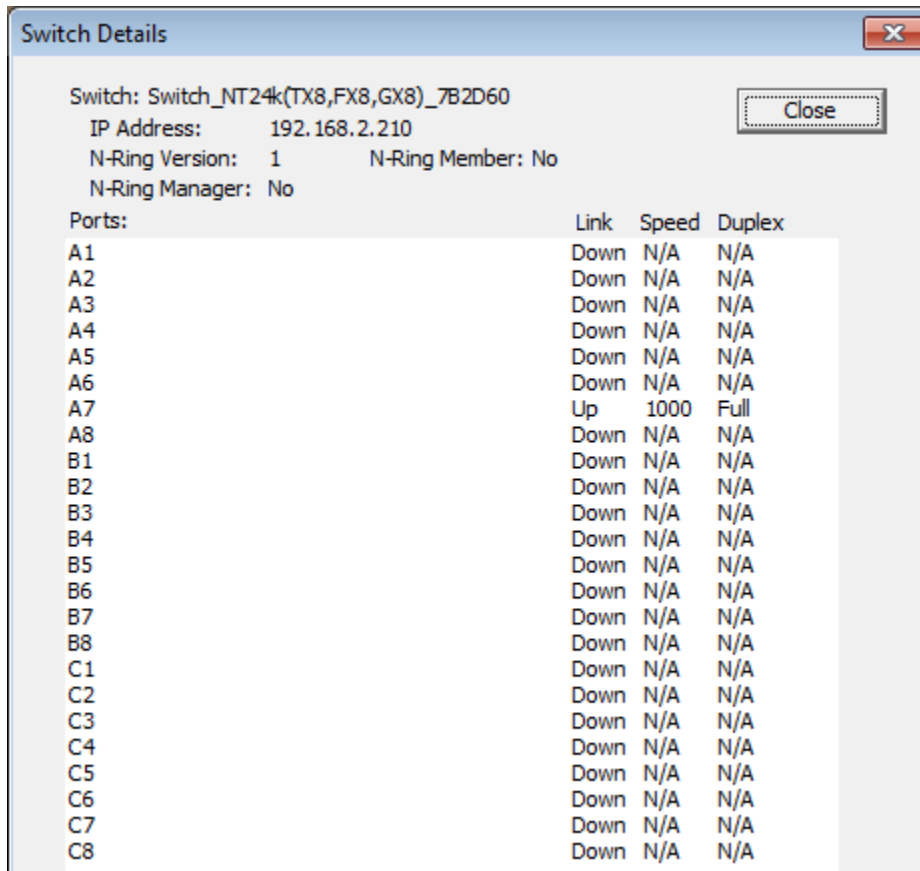
Transmit Error Information

Tx Deferred Transmit	The number of packets transmitted by a port for which the first transmission attempt is delayed because the medium is busy.
Tx Dropped Packets	The number of transmit packets dropped by a port due to the lack of resources. The counter is only incremented if the error was not counted by tx late collision, or tx excessive collision.
Tx Excessive Collision	The number of packets that are not transmitted from a port because the packet experienced 16 transmission attempts.
Tx Frame In Disc	The number of valid packets received which are discarded by the forwarding process due to lack of space on an output queue.
Tx Late Collisions	The number of times that a collision is detected later than 512 bit-times into the transmission of a packet.

Interpreting the Data

Starting from the main screen, as seen below, select a switch from the right hand window, then select **“Switch Details”**. From the Ports window, Choose **“View Switch”** to monitor switch details, or **“View Ports”** to monitor port counters:

Example of the “Switch Details” screen:



The screenshot shows a window titled "Switch Details" with a close button in the top right corner. The window displays the following information:

Switch: Switch_NT24k(TX8,FX8,GX8)_7B2D60
IP Address: 192.168.2.210
N-Ring Version: 1 N-Ring Member: No
N-Ring Manager: No

Below this information is a table with the following columns: Ports, Link, Speed, and Duplex. The table lists 24 ports (A1 through C8) and their corresponding status, speed, and duplex mode.

Ports:	Link	Speed	Duplex
A1	Down	N/A	N/A
A2	Down	N/A	N/A
A3	Down	N/A	N/A
A4	Down	N/A	N/A
A5	Down	N/A	N/A
A6	Down	N/A	N/A
A7	Up	1000	Full
A8	Down	N/A	N/A
B1	Down	N/A	N/A
B2	Down	N/A	N/A
B3	Down	N/A	N/A
B4	Down	N/A	N/A
B5	Down	N/A	N/A
B6	Down	N/A	N/A
B7	Down	N/A	N/A
B8	Down	N/A	N/A
C1	Down	N/A	N/A
C2	Down	N/A	N/A
C3	Down	N/A	N/A
C4	Down	N/A	N/A
C5	Down	N/A	N/A
C6	Down	N/A	N/A
C7	Down	N/A	N/A
C8	Down	N/A	N/A

Note the IP Address and the N-Ring protocol version, which are presented from 700, 7000, 9000 and NT24k series switches.

Each 700, 7000, 9000 and NT24k series N-Ring Manager reports whether or not it is an N-Ring Manager, and the state of the N-Ring.

Each 700, 7000, 9000 and NT24k series switch also reports whether or not it is an active N-Ring member.

Example of the “Port Counters” screen:

The screenshot shows a window titled "Port Counters" with a close button in the top right corner. The window displays the following information:

Switch: Switch_NT24k(TX8,FX8,GX8)_7B2D60
IP Address: 192.168.2.210
Port: A7
Speed: 1000 Mbps Link: Up N-Ring Version: 1 N-Ring Member: No
Duplex: Full Enable: Yes N-Ring Manager: No

Usage: 0 100 %

Tx Octets	451025716	Rx Octets	35519282
Tx Dropped Packets	0	Rx Dropped Packets	0
Tx Broadcast Packets	0	Rx Broadcast Packets	43755
Tx Multicast Packets	2348461	Rx Multicast Packets	213850
Tx Unicast Packets	8	Rx Unicast Packets	8
Tx Collisions	0	Rx Undersize Packets	0
Tx Single Collision	0	Rx Oversize Packets	0
Tx Multiple Collision	0	Rx Jabbers	0
Tx Deferred Transmit	0	Rx Alignment Errors	0
Tx Late Collision	0	Rx Good Octets	35519282
Tx Excessive Collision	0	Rx SA Changes	0
Tx Frame In Disc	0	Rx FCS Errors	0
Tx Pause Packets	0	Rx Pause Packets	0
64 Packets	696266	Rx Fragments	0
65 to 127 Packets	46158	Rx Excessive Disc Size	0
128 to 255 Packets	1860406	Rx Symbol Errors	0
256 to 511 Packets	2214	1024 to 1522 Packets	0
512 to 1023 Packets	1038		

Select the port from the list below:

- A1
- A2
- A3
- A4
- A5
- A6
- A7**
- A8
- B1
- B2
- B3
- B4
- B5
- B6
- B7
- B8
- C1
- C2
- C3
- C4
- C5
- C6
- C7
- C8

Example of a healthy switch port:

Port Counters

Switch: Switch_NT24k(TX8,FX8,GX8)_7B2D60
 IP Address: 192.168.2.210

Port: A7
 Speed: 1000 Mbps Link: Up
 Duplex: Full Enable: Yes

N-Ring Version: 1
 N-Ring Manager: No
 N-Ring Member: No

Usage: 0 100 %

Tx Octets	972002818	Rx Octets	77373282
Tx Dropped Packets	0 <input checked="" type="checkbox"/>	Rx Dropped Packets	0 <input checked="" type="checkbox"/>
Tx Broadcast Packets	0	Rx Broadcast Packets	98077
Tx Multicast Packets	5057201	Rx Multicast Packets	463577
Tx Unicast Packets	1040	Rx Unicast Packets	749
Tx Collisions	0 <input checked="" type="checkbox"/>	Rx Undersize Packets	0 <input checked="" type="checkbox"/>
Tx Single Collision	0	Rx Oversize Packets	0 <input checked="" type="checkbox"/>
Tx Multiple Collision	0	Rx Jabbers	0 <input checked="" type="checkbox"/>
Tx Deferred Transmit	0	Rx Alignment Errors	0 <input checked="" type="checkbox"/>
Tx Late Collision	0	Rx Good Octets	77373282
Tx Excessive Collision	0	Rx SA Changes	0
Tx Frame In Disc	0	Rx FCS Errors	0 <input checked="" type="checkbox"/>
Tx Pause Packets	0 <input checked="" type="checkbox"/>	Rx Pause Packets	0 <input checked="" type="checkbox"/>
64 Packets	1500134	Rx Fragments	0 <input checked="" type="checkbox"/>
65 to 127 Packets	105895	Rx Excessive Disc Size	0
128 to 255 Packets	4006636	Rx Symbol Errors	0 <input checked="" type="checkbox"/>
256 to 511 Packets	4940	1024 to 1522 Packets	524
512 to 1023 Packets	2515		

Select the port from the list below:

- A1
- A2
- A3
- A4
- A5
- A6
- A7**
- A8
- B1
- B2
- B3
- B4
- B5
- B6
- B7
- B8
- C1
- C2
- C3
- C4
- C5
- C6
- C7
- C8

Example of potential cabling issues:

Port Counters

Switch: Switch_NT24k(TX8,FX8,GX8)_7B2D60
IP Address: 192.168.2.210

Port: A7
Speed: 1000 Mbps Link: Up N-Ring Version: 1 N-Ring Member: No
Duplex: Full Enable: Yes N-Ring Manager: No

Usage: 0 100 %

Tx Octets	972461410	Rx Octets	77406462
Tx Dropped Packets	0	Rx Dropped Packets	5
Tx Broadcast Packets	0	Rx Broadcast Packets	98105
Tx Multicast Packets	5059589	Rx Multicast Packets	463789
Tx Unicast Packets	1040	Rx Unicast Packets	749
Tx Collisions	0	Rx Undersize Packets	0
Tx Single Collision	0	Rx Oversize Packets	0
Tx Multiple Collision	0	Rx Jabbers	0
Tx Deferred Transmit	0	Rx Alignment Errors	0
Tx Late Collision	0	Rx Good Octets	77406462
Tx Excessive Collision	0	Rx SA Changes	0
Tx Frame In Disc	0	Rx FCS Errors	75
Tx Pause Packets	0	Rx Pause Packets	0
64 Packets	1500842	Rx Fragments	0
65 to 127 Packets	105923	Rx Excessive Disc Size	0
128 to 255 Packets	4008526	Rx Symbol Errors	50
256 to 511 Packets	4942	1024 to 1522 Packets	524
512 to 1023 Packets	2515		

Select the port from the list below:

- A1
- A2
- A3
- A4
- A5
- A6
- A7**
- A8
- B1
- B2
- B3
- B4
- B5
- B6
- B7
- B8
- C1
- C2
- C3
- C4
- C5
- C6
- C7
- C8

Automated Report

N-View can be launched from the command line and generate a list of all the switches found on-line. The output is stored to a text file. This makes it possible for on-site servers to run a batch file each morning that queries the switches and records the results. The results can then be automatically emailed to Customer Service, who can deploy the field techs to check a switch to see why it is off line. Problems can be solved before the end users even know there was one.

The command line interface will only detect and list switches that have been mapped through the graphical interface. Before running from the command line follow the steps in the *Mapping Switches* section. When called from the command line, the N-View application will be started and listen for switches on the network. After a short period, about 10 seconds, the application will close again and the results will be accessible.

The file produced (report.txt) will contain the creation time, MAC addresses and aliases for all the switches that were discovered during the 6+ second period. If report.txt already exists it will be overwritten with the new information. To keep a running log and/or to keep records on one or more adapters, a batch file or script will be needed to concatenate sequential report.txt files to another file or files.

The N-View executable can be found in the following directories:

32 bit Windows: "C:\Program Files\N-Tron\N-View"

64 bit Windows: "C:\Program Files (x86)\N-Tron\N-View"

The command line interface requires two arguments to be passed to N-View, the network adapter to listen on, and the report command. These must be surrounded by single quotes.

Example of the command line is below

```
N-View.exe 'FE575C-3COM 10/100 LAN CardBus-Fast Ethernet' 'report'
```

The first argument in the single quotes is the name of the adapter exactly as it is shown in the adapters list of N-View. For simplicity, copy it from the drop down box of N-View. The word 'report' is not case sensitive.

Here is an example of a report.txt file:

```
Active Switches  
  
12/05/2014 09:59:17 AM  
  
00.07.AF.00.05.09 - Switch 509FX00.07.AF.00.05.17 - Switch 517FX
```

N-Tron Corporation N-VIEW SOFTWARE LICENSE AGREEMENT

IMPORTANT, PLEASE READ THIS FIRST. THIS IS A LICENSE AGREEMENT.

N-Tron is willing to license the accompanying software to you only upon the condition that you accept all of the terms contained in this license agreement and any supplementary or unique license terms included herewith ("Agreement").

READ THE TERMS AND CONDITIONS OF THIS AGREEMENT CAREFULLY BEFORE SELECTING THE "**I ACCEPT**" BUTTON AT THE BOTTOM OF THE PAGE. BY SELECTING THE "**I ACCEPT**" BUTTON, YOU ARE CONSENTING TO BE BOUND BY ALL THE TERMS OF THE LICENSE AGREEMENT AND THE SOFTWARE WILL BE INSTALLED.

IF YOU ARE NOT WILLING TO BE BOUND BY THIS AGREEMENT AND YOU DO NOT AGREE TO ALL OF ITS TERMS AND CONDITIONS, SELECT "**I DO NOT ACCEPT**" -- WHICH WILL CANCEL THE LOADING OF THE SOFTWARE. USE OF THE SOFTWARE ALSO INDICATES YOUR ASSENT TO BE BOUND BY THE LICENSE TERMS SET FORTH HEREIN.

COPYING OF THIS COMPUTER PROGRAM OR ITS DOCUMENTATION EXCEPT AS PERMITTED BY THIS LICENSE IS COPYRIGHT INFRINGEMENT UNDER THE LAWS OF YOUR COUNTRY. IF YOU COPY THIS COMPUTER PROGRAM WITHOUT PERMISSION OF N-TRON, YOU ARE VIOLATING THE LAW. YOU MAY BE LIABLE TO N-TRON FOR DAMAGES, AND YOU MAY BE SUBJECT TO CRIMINAL PENALTIES.

1. Grant of License

N-Tron Corporation ("N-Tron") grants you a nonexclusive, nontransferable license to use the enclosed program (the "Software") and its printed manual and other accompanying material ("Documentation") with equipment owned by you or under your control, according to the terms and conditions of this License Agreement.

Back-Up Copy: This License permits you to make only one archival (back-up) copy of the Software. Such archival copy may not be installed on another computer, unless such computer is a partitioned drive of a server to which only the authorized user has access. In any event, the archival copy may not be used or installed as long as another copy of the Software is installed on any computer. If the Documentation is in printed form, it may not be copied. If the Documentation is in electronic form, you may print out one (1) copy, which may not be copied.

2. Copyright

Title and copyrights to the Software, Documentation and accompanying materials and any copies made by you remain with N-Tron. Unauthorized copying of the Software or Documentation, or failure to comply with the above restrictions, will result in automatic termination of this license.

3. Limited Warranties

N-Tron warrants that: (1) for a 90 day period beginning on the date of delivery of the Software to you as evidenced by your receipt, the Software will provide the facilities and functions generally described in the Documentation and that the media on which the Software is furnished, the Documentation accompanying the Software will be free from defects in materials and workmanship under normal use.

EXCEPT FOR THE ABOVE EXPRESS LIMITED WARRANTIES, N-TRON MAKES AND YOU RECEIVE NO WARRANTIES, EXPRESS, IMPLIED, STATUTORY OR IN ANY COMMUNICATION WITH YOU, AND N-TRON SPECIFICALLY DISCLAIMS ANY OTHER WARRANTY INCLUDING THE IMPLIED WARRANTY OF MERCHANTABILITY OR FITNESS FOR A PARTICULAR PURPOSE. N-TRON DOES NOT WARRANT THAT THE OPERATION OF THE SOFTWARE WILL BE UNINTERRUPTED OR ERROR-FREE. The above exclusions may not apply to you as some jurisdictions do not allow the exclusion of implied warranties. In addition to the above warranty rights, you may also have other rights,

which vary from jurisdiction to jurisdiction.

- 1. N-Tron's entire liability and your exclusive remedy under the warranties made in this License Agreement will be, at N-Tron's option, to attempt to correct or work around errors, to replace the defective media; documentation or copy protection device, or to refund the license fee and terminate this license. This remedy is subject to the return of the defective media, documentation or copy protection device with a copy of your receipt to your local N-Tron office or the Authorized N-Tron Reseller from whom it was obtained within ninety (90) days from the date of its delivery to you. Following expiration of this ninety (90)-day period, N-Tron will replace any defective or damaged copy protection device in return for payment of an amount which covers the cost of a replacement device plus a fee for handling and shipment.***

4. Disclaimer

DUE TO THE LARGE VARIETY OF POTENTIAL APPLICATIONS FOR THE SOFTWARE, THE SOFTWARE HAS NOT BEEN TESTED IN ALL SITUATIONS UNDER WHICH IT MAY BE USED. N-TRON SHALL NOT BE LIABLE IN ANY MANNER WHATSOEVER FOR THE RESULTS OBTAINED THROUGH THE USE OF THE SOFTWARE. PERSONS USING THE SOFTWARE ARE RESPONSIBLE FOR THE SUPERVISION, MANAGEMENT AND CONTROL OF THE SOFTWARE. THIS RESPONSIBILITY INCLUDES, BUT IS NOT LIMITED TO, THE DETERMINATION OF APPROPRIATE USES FOR THE SOFTWARE AND THE SELECTION OF THE SOFTWARE AND OTHER PROGRAMS TO ACHIEVE INTENDED RESULTS.

5. LIMITATION OF LIABILITY

IN NO EVENT WILL N-TRON BE LIABLE FOR ANY LOSS OR DAMAGES OF ANY KIND, INCLUDING LOSS OF DATA, LOST PROFITS, COST OF COVER OR OTHER SPECIAL, INCIDENTAL, CONSEQUENTIAL OR INDIRECT DAMAGES ARISING OUT OF THE USE OR INABILITY TO USE THE SOFTWARE OR DOCUMENTATION, HOWEVER CAUSED AND ON ANY THEORY OF LIABILITY. THIS LIMITATION WILL APPLY EVEN IF N-TRON OR ANY N-TRON RESELLER HAS BEEN ADVISED OF THE POSSIBILITY OF SUCH LOSS OR DAMAGE. YOU ACKNOWLEDGE THAT THE LICENSE FEE REFLECTS THIS ALLOCATION OF RISK.

N-Tron shall have no responsibility or liability whatsoever arising from loss or theft of the Software or of any copy protection device with which the Software is supplied. Specifically, N-Tron shall not be obligated to replace any lost or stolen software or copy protection device. You are solely responsible for safeguarding the Software and any copy protection device from loss or theft and protecting your investment through insurance or otherwise. The above limitation may not apply to you because some jurisdictions do not allow the limitation or exclusion of liability for incidental or consequential damages.

6. Restricted Rights for US Government Customers

This Software and Documentation are provided with RESTRICTED RIGHTS for US Government customers. Use, duplication, or disclosure by the US Government is subject to restrictions as set forth in FAR 12.212 (Commercial Computer Software—Restricted Rights) and DFAR 227.7202 (Rights in Technical Data and Computer Software), as applicable. Manufacturer is N-Tron Corporation 3101 International Drive, Mobile, AL 36606.

7. International Sales

If you purchased this product in any country other than the US, you agree to the following: The parties hereto confirm that it is their wish that this Agreement, as well as other documents relating hereto, including Notices, have been and shall be written in the English language only. Les parties aux présentes confirment leur volonté que cette Convention de même que tous les documents y compris tout avis qui s'y rattache, soient rédigés en langue

anglaise.

8. General.

- A. This license shall terminate without further notice or action by N-Tron if you, the licensee, shall become bankrupt, make an arrangement with your creditors or go into liquidation.
- B. This Agreement shall not be governed by the UN Convention on Contracts for the Sale of Goods; rather this Agreement shall be governed by the laws of the State of Alabama, U.S.A. This Agreement is the entire agreement between us and supersedes any other communications or advertising with respect to the Software and Documentation. If you have any questions, please contact your Authorized N-Tron Reseller.
- C. If any provision of these license conditions is found to be invalid or otherwise unenforceable, the further conditions of this license will remain fully effective and the parties will be bound by obligations which approximate, as closely as possible, the effect of the provision found invalid or unenforceable, without being themselves invalid or unenforceable.
- D. If you have any questions please send written inquiries to: N-Tron Corporation, 3101 International Drive, Mobile, AL 36606.